

THE Horsford News

January 2022 Issue 171



News, Views and Information
for the Parish of Horsford

SESMA

**Beginners
Intros Available**



WE ARE OPEN

01603 528689 www.sesma.co.uk



THE Horsford News

thehorsfordnews@btinternet.com



Your news and views, your stories and letters,
local information and local businesses for the Parish of Horsford

ADVERTISING STYLES AND PRICING

Style	Dimensions	Price – per year (4 issues)
Eighth Page (Landscape)	90mm wide x 65mm deep	£80
Quarter Page (Portrait)	90mm wide x 135mm deep	£120
Quarter Banner (Landscape)	190mm wide x 65mm deep	£120
Half Page (Landscape)	190mm wide x 135mm deep	£180
Full Page (Portrait)	190mm wide x 277mm deep	£320

Artwork

Adverts can be received in various software formats and the Editor will make every effort to accommodate these. Adverts not received in the dimensions above or where a change to an advert has been requested – this may incur an artwork charge of £15 at the discretion of the editor.

If creation of a brand new advert is needed – these can be created from £15.

Anyone wishing to advertise please telephone the Editor on 891902

EDITORIAL

Its 2022! The year sounds futuristic, doesn't it? Being a child of the 70s (just) I would have thought that in the year 2022 we would be literally flying around in cars, jetting on holiday would take half the time and everything would be powered through solar and other renewable sources of power with no reliance on fossil fuels. I appreciate there have been some advancements – electric cars are becoming a norm, e-scooters are commonplace and renewable energy is a 'thing'. However, getting away to foreign shores now feels like a proper trial and seeing the monthly Gas and Electricity bill doubling in no-time its feels like there is always something else to dampen the mood.

So, a year on from the full 2021 lock-down – I wrote last year that I hoped Christmas 2021 would be a far cry from the year before. I'm not sure about yours – but ours was again – relatively basic. Work dues cancelled, loads of people I know with COVID (thankfully none too serious) and so forced to socialise – at home – in the kitchen in what at some point was as well stocked as the Rovers Return. Fortunately, my husbands a reasonable drinking partner – although I did get a little fed up with the Christmas music throughout November and December.

Any New Year Resolutions? I'd be lying if I said I'd considered going Vegan or Dry. However, I applaud anyone changing their habits – especially those that can have a really positive impact on their lives and the wider environment. If anyone out there has managed to make such a bold or life-changing choice – why not share what you are doing? All good news stories, charitable activity or even epic fails – I'd be more than happy to include your stories.

So – things to look forward to this year – hopefully the vaccine program can continue at pace at it sounds as though its success is vital to a return to an element of normality. Its also great to see businesses flourishing once again. Most trades that I have dealings with are very busy and its good to hear those advertise here are receiving good local customer and long may it continue.

For Horsford, this year should hopefully be the year that we have a carnival. It's been ear-marked a few times and cancelled for obvious reasons. Let's hope 2022 delivers.

I'm always interested in additional content, news from groups, clubs and I've already referenced any good news stories - from you – normal people wanting to make a difference to either your own lives, or to help others – if you have something to share – let me know.

Finally – if there are any budding artists out there – wanting to share a talent for a drawing that I can use for the front cover and shared with over 2000 houses – let me know. A local landmark or view would be perfect – just let me know.

Enjoy the read!

Lisa Starling
Editor

HORSFORD PARISH COUNCIL

<http://www.horsfordpc.info>

Clerk to the Council - Clerk to the Council – Anne Panella

Mobile 07792865144

e-mail horsfordpc@gmail.com

Tree Survey: The Parish Council recently commissioned a survey and risk assessment on the trees within the 4 Pits and the Village Hall Recreation Ground in order to evaluate any existing and potential tree hazards. As a result, some work will be required in all these areas to ensure the safety but also the long-term health of the trees. Work will be carried out over the next few months.

Vacancies for Parish Councillors: the parish council has two vacancies and would be delighted to welcome some new faces. The criteria are very easy to fulfil, so if you are interested or would like to know more about being a parish councillor, please do contact me or, attend one of the monthly meetings which are held at 7.15 pm in the Village Hall on the first Monday of the month, unless that is a Bank Holiday. The last election was held in May 2019, the next in 2023 so in the meantime any person who is invited to join the Parish Council will do so as a Co-opted Member until the next election.

Criteria for becoming a Parish Councillor

- be at least 18 years old
- be a British citizen, an eligible Commonwealth citizen and
- meet at least **one** of the following four qualifications:

a) Your name must appear on the register of local government electors for the parish/community at the time of your nomination and throughout your term of office should you be elected/co-opted

b) You have occupied any land or other premises as owner or tenant in the parish/community during 12 months before the day of your nomination and the day of election or co-option

c) Your main or only place of work during the 12 months prior to the day of your nomination and the day of election/co-option has been in the parish/community area.

d) You have lived in the parish/community area or within three miles of it during 12 months before the day of your nomination and the day of election/co-option

Parish Councillor contact details:

adrian.scott@horsfordpc.co.uk

deb.scott@horsfordpc.co.uk

angela.makinson@horsfordpc.co.uk

chris.brown@horsfordpc.co.uk

derek.jacks@horsfordpc.co.uk

gary.branch@horsfordpc.co.uk

joanne.keeler@horsfordpc.co.uk

kathryn.clarke@horsfordpc.co.uk

katrina.johnson@horsfordpc.co.uk

sandra.lumbard@horsfordpc.co.uk

virginia.sokalsky@horsfordpc.co.uk

HORSFORD VILLAGE HALL MANAGEMENT COMMITTEE (VHMC)

We ended the year with Christmas Carols outside the Village Hall with refreshments courtesy of the Social Club. A lot of people joined together to celebrate Christmas and we also had a brass band playing carols. Everyone was singing loudly and enjoying mince pies and mulled wine. What a way to start the Christmas festivities.

The main Hall continues to be busy with our regular hirers returning and we are now able to take bookings for celebrations in the large Hall. A new floor has been laid because the old one, which had been in place for a long time, was starting to wear out.

Any requests relating to hiring the Hall should be addressed to our Caretaker, Diane Baxter, on 01603 893900.

The old surface in the play areas has been replaced with a Wet Pour surface which is made of a blended mix of rubber granules bound together and is used in many school playgrounds. Some additional seating has been provided both in the play areas and on the perimeter of the Recreation Ground.

If you would like to become a Trustee of the Village Hall and be involved in the running of our Village Hall and Recreation Ground, please contact Debbie Stolworthy at debstolworthy@btinternet.com or on 07702 620720 and she will send you information about what the role of a charity Trustee entails.

The VHMC Trustees would like to wish all our hirers a Happy New Year

Angela Makinson
VHMC Trustee

BUSINESS ACTION PLAN GROUP (BAP)

The BAP Group is a working party set up by Horsford Parish Council in 2018, following the adoption of the Horsford Neighbourhood Plan (HNP). The purpose of the Group is to make sure that Policies and Projects in the HNP (and any new ones in the future), where possible, are followed up and implemented. The BAP Group is made up of volunteers, both Parish Councillors and members of the general public, who work on projects approved by Horsford Parish Council. BAP suggest the projects, backed up by timescales, costs

and benefits of the projects and with the Parish Council's approval we start working on them.

Here are some of the projects we are currently working on or implemented during 2021.

OUTPOST Horsford Youth

Our Youth Group was set up in December 2019. As it turned out not a good time to start something new. The Group is run on our behalf by YMCA and there are two youth workers at every session. The first session was held at the Village Hall at the end of January 2020 and naturally everything stopped in March 2020 and then stopped and restarted during the remainder of that year and finally returned properly on 13 May 2021. The sessions are now held in the large Hall which allows many more activities such as pool, table tennis, indoor softball football, crafting and bicycle maintenance. On average there are 16 young people per week. Attendance is free so there is a lot of work underway submitting Funding Applications to make sure OUTPOST has a sustainable future.

C3 Toilets Project

The new outside toilet block project on the Recreation Ground at the Village Hall, was implemented by BAP members and then taken on by two Parish Councillors. It is hoped to be finished in the next month.

Duke of Edinburgh commemorative roses

These roses have now been planted by the white gates either end of the village. Two red roses - Hunter which is a very deep red rose on the left hand side of each white gate, and on the right hand side is a rose called Joseph's Coat with different shades of gold. They will grow to about 4' high and 3-4 ft wide. Both are fragrant roses.

Welcome Pack

One of the BAP team came up with the idea of having a document to hand out to new people in the village. Copies have been distributed particularly on the housing developments. The Welcome Pack has been very well received. If anyone would like a copy, please contact Virginia Sokalsky at virginia.sokalsky@horsfordpc.co.uk.

Green Infrastructure Plan for Horsford and Walks in Horsford

A huge amount of work is being accomplished on a Green Infrastructure Plan for Horsford. Work has been completed at the Pits to provide seating and an environment for relaxation and enjoyment of trees and fresh air. An exciting new project is also underway to develop a bike park for young people to use and will commence this year.

Use of Neighbourhood Plan Forms for HPC to consider Planning Applications in a consistent way

This process is now standard for all planning applications that are received by HPC. The forms that come from the Neighbourhood Plan are used so that our responses to Broadland District Council (BDC) are consistent and stronger reference is being made, where appropriate, to sustainable components in all planning applications whether it is for an extension or a number of houses.

White Gates at each end of the village.

It took a while to get these put in place, and with the help of our County Councillor, Tony Adams, these were finally put in place during 2021.

Matting under play equipment and occasional seating on the Recreation Ground

The matting under all the equipment in the play areas has been replaced with a wet pour safety surface and picnic tables are provided in these areas. Occasional seating on the Recreation Ground is being installed over the holidays.

Working with BDC regarding the Land owned by Bloor and clearing the Beck

Along with the Parish Council, BAP have been liaising with relevant people at BDC regarding regarding the adoption by BDC of the land currently owned by Bloor. This is now planned for 2022 once Bloor have done the remedial works to the land that are required. The state of the Beck is also part of the ongoing discussions taking place between HPC and residents regarding the flooding that took place on 23 December 2020.

Transport Issues in Horsford

HPC agreed funding for consultants to help with this project. Two consulting firms were interviewed and Royal HaskoningDHV were selected. A Transport Survey was carried out in May 2021 with over 600 responses (approx.12% of the village population). Analysis and planning have taken place and a workshop is being held on 10 January 2022 for Parish Councillors to discuss the way forward. Royal HaskoningDHV have used iRap as their modelling tool. Horsford is the first case study in the UK using this tool.

Horsford in Bloom

This project started in 2021 but there are many complexities involved and the need to find funding for the flowers and receptacles is still work in progress. It is hoped this will happen in 2022.

Community Resilience Plan

The emergency planning work has restarted working with BDC/SN representatives. The first

item will be on flooding since this is an emergency following on from the flooding event that happened in Horsford in 2020.

Sustainability in Horsford

A new project is currently proposed to look at ways of making Horsford more sustainable for the future such as electric car charging points. It is expected that this project will commence early this year.

Would you like to get involved?

BAP is a small group and we would welcome new volunteers to work with us on projects that benefit our village. We have recently been joined by Colin Stringer and Kelly Jayne Thorpe and having more volunteers working in the team, we can take on more projects. If you would like to join us, please contact Angela Makinson at angela.makinson@horsfordpc.co.uk and she will give you more details. We meet on the third Thursday in the month, in the Committee Room at the Village Hall.

This article has been written by the Communications Group, part of the Business Action Plan Group

HORSFORD CHURCH OF ENGLAND VA PRIMARY SCHOOL

As we start a new year it is a time to look back over the past term and look forward to the fresh opportunities we have ahead of us.

As always the run up to Christmas was a very busy time in school with lots of exciting events, most a little different due to COVID restrictions but nevertheless enjoyed by all.

Horsford Advent Calendar Window

We were thrilled to be able to take part in the window Advent Calendar for the second time this year. The children very much enjoyed decorating the windows and we hope they were enjoyed by the village also.

Y3/4 Church Advent

Year 3/4 attended an Advent celebration at Horsford Church. They brought their handmade white decorations, which they placed on the tree and Reverend Margaret told them all about Advent and why this time of year is so special to Christians.

Christmas Performances

The pandemic impacted a lot last year but there is something special about the Reception Nativity that we felt it was important the children (and parents) didn't miss out. Mr David Terry was released from his work at the BBC for the day and spent the day in school recording the Reception children performing and singing, they all did an amazing job telling the story of the first Christmas.

Thank you to all our staff who helped the children rehearse to present us with such a beautiful performance.

Alongside the Reception performance we also recorded a whole school Christmas performance with contributions from each class. It was a traditional retelling of the story of the first Christmas, complete with readings from The Bible and songs, many of which included solo or duet singing. Thanks again to the staff and children for a wonderful performance.

Christmas Fayre

This year our Christmas Fayre was a true village event. It was held in the village hall on a Sunday and was open for all to come and see. Thank you to everyone who donated items, helped create gifts and volunteered to run a stall on the day. We do not have a total yet, but the PTA have reported that it is likely to be in excess of £1000! Thank you to the community for supporting this event.

Christmas Hampers

Horsford Helpers support several local families, and we wanted to support them to help provide a lovely Christmas for everyone in the community. Children and parents from across the school worked together to create Christmas hampers to donate to this local charity. The target was to have one hamper per class, but as always, our wonderful children and their families exceeded this target and we averaged two boxes per class. Keep an eye out, and an ear to the ground, to find out what the children will have as their Spring challenge!

Christmas is a special time in school and we are very happy that the children and staff were able to enjoy the end of term with festive celebrations together. Moving on to this term, as recent events have shown us, we can never be sure of what lies

ahead but we are all looking forward to a settled and focussed term working and playing together.

Wishing you all a very happy and healthy new year.

3RD HORSFORD BROWNIES AND 1ST ST FAITHS

Our Brownies have had a fantastic end to the first full term by completing many activities such as Remembrance Sunday. We couldn't of been prouder for being part of such an amazing service. The girls made a wreath and were exceptionally well behaved.

The girls completed a fundraiser activity where they made a calendar. Their task was to draw a picture of what they feel each month of the year means to them.

Lots of games and fun has been had leading up to Christmas, including some wonderful craft activities which we're sure decorated many a home.

All of our current girls have now completed their promises which we're sure you will agree is such a wonderful thing for them to have achieved.

We would like to thank all of our volunteers during last term for helping us with each session - without you we would not be able to continue.

Brown Owl, Snowy Owl and Little Owl



How big a pension pot do you need?

The normal minimum pension age when you can access your pensions is currently 55 and set to increase to 57 on 6 April 2028 to reflect increases in the state pension age. If you haven't reached 55 by 2028 then you will have to wait another two years before being able to access your pension. There may be further increases in future.

But what if you want to retire now? Although being able to get at your money is tempting, it may not be the shrewdest way to prepare for your future. It's usually good practice to pay into your pension for as long as possible, allowing it to grow as large as it can. For most people, therefore, retirement will usually come in their mid-60s.

What if poor health, or simply having had enough of work means that you want to take early retirement? How much would you need to save, how much retirement income will you need? Remember, if you want to retire early you may be waiting years for the state pension to start.

According to the Pensions and Lifetime Savings Association, a single person would need an income of £10,200 to live a "minimum level" lifestyle in retirement, which is slightly more than the current maximum new State Pension of just over £9,339 a year. To live comfortably, rather than meagrely, you might need £17,818 a year. If you are a couple, or don't own your own home, you will need to aim for a higher income.

MONEY MATTERS



PETER BARTON

But we are all different, and a working life spent as a high earner would probably mean that this income would fall rather short of your real needs.

An alternative way to estimate the retirement income you might need is the 70% rule. This suggests you need 70% of your working income to maintain the lifestyle you want in retirement. So, if you retire on a salary of £50,000 you would be looking at achieving an income of around £35,000.

Remember, your retirement lifestyle will change. Early in retirement you may spend more time travelling and enjoying your new freedom. Later, you may feel less active and spend less – but then you may need expensive long-term care. You will also need to consider inflation. In the past 30 years, purchasing power has almost halved – £1 in 2021 can buy only as much as 50 pence could in 1991. Retiring at 55 might mean being on a pension for 30 years, so you'd need to factor in the effects of inflation.

The average UK pension pot stands at £61,897. However, if you retire early, you will need a much larger fund for a comfortable retirement. This may sound out of reach but starting early, making sufficient contributions and giving them time to grow will help. Planning how you

use that pot will also be key to success. If this is something which you need some help with, please get in touch for an initial free conversation.

The information contained in this article is based on the opinion of Continuum and does not constitute financial advice or a recommendation to suitable retirement strategy, you should seek independent financial advice before embarking on any course of action.

A pension is a long-term investment. The fund value may fluctuate and can go down, which would have an impact on the level of pension benefits available. Pension income could also be affected by interest rates at the time benefits are taken.

The tax treatment of pensions in general and tax implications of pension withdrawals will be based on individual circumstances, tax legislation and regulation, which are subject to change in the future.

The Financial Conduct Authority does not regulate taxation advice.

Peter Barton is an Independent Financial Adviser at Continuum.
Tel: 01603 879875 or 07787 561087. Email:
peter@mycontinuum.co.uk
www.mycontinuum.co.uk

CONTINUUM
YOUR FINANCIAL FUTURE MADE REAL



Planning for the 2022 Carnival is now well under way. A full carnival committee meeting was held on Wednesday 12 January. The Charities the Carnival are going to support include Horsford Methodist Church, Horsford All Saints Church, Horsford Primary PTA and Horsford Brownies and Rainbows. We have chosen these charities to support the families and residents of Horsford.

We are currently sourcing raffle prizes from local business for our Grand Prize Raffle, were 1st Prize will be £500 cash kindly donated by Pronto Joinery. If your business is in Horsford and would kindly donate a voucher or a small prize we would be most grateful.

We do already have a number of stalls already attending, but if you would like a stall at the Carnival please get in contact with Kelly Thorpe by email kellyjthorpe@gmail.com.

We are pleased also to add Durban Grill, Crition Presse, Waffle Wagon and Bucket List to our food and drink vendors attending the Carnival. Norwich Samba have also joined our procession along with Sesma.

We will be in need of volunteers for the actual day itself, so you would like to get involved with the Carnival please contact Derek Jacks email derekjacks76@tiscali.co.uk or Adrian Scott email Horsfordcarnival@btconnect.com

The next Carnival meeting is on Wednesday 16 February @ 7pm at the social club. We welcome new people to attend to collect more ideas!

Horsford Carnival Committee



NEWS FROM ALL SAINTS CHURCH, HORSFORD

Happy New Year! I know the fireworks have long disappeared from the New Year celebrations so here's hoping and praying for a more positive and

hopeful 2022.

Thank you to everyone who came along to the various Christmas services in December. It started early with the Beavers, Cubs and Scouts having their Christmas carol service at All Saints. Then what a wonderful sound over 100 made at the community carol singing around the Village Hall Christmas Tree. Thank you to the social club who agreed we could host the carol singing there, to Derek and the social club for providing hot mulled wine and to the wonderful musicians who played.

The Christingle service also had around 100 people. Unfortunately I couldn't be there due to illness but our Lay Reader Richard led the service with what I understand was a lively, fun packed, enjoyable one, including the arrival of Mary, Joseph, Jesus and the shepherds to the nativity stable! Those who came gave just over £100 to The Children's Society, which is great news, thank you. Over 40 children left with a goody bag which included a picture to colour and, thanks to Gordon Barber Wroxham, a chocolate orange Christingle. With 30 at the atmospheric midnight service and around the same number at the all age informal Christmas morning service, it felt like Christmas celebrations were almost back to normal.

I enjoyed receiving the entries to the 2021 Christingle colouring competition which Richard and I had to decide who would win. The winners were:

- Under 5's: Esther
- 5 & 6 year olds: Grace and Saorise (a tie!)
- 7 and over: Charles

You can see their pictures on the display board in All Saints Church.

Easter is coming!

With one celebration over, it's planning time for the next one! Easter is the central celebration for the Christian church. It's a journey, through the celebrations of Palm Sunday when we remember Jesus arriving in Jerusalem on a donkey to great excitement of the crowds, sharing his last meal with his friends the disciples, the sadness of Good Friday when Jesus was killed to the joy of Easter Sunday when we celebrate Jesus rising from the dead and the enjoyment of Easter eggs, reminding us of the open tomb and new life.

Easter is poignant for other reasons. It is a time to remember those who have meant so much to us. It is a Christian tradition to have a display of Easter lilies in the church building, each one representing someone loved but who has died. If you would like to have a lily in the display to remember someone by, do contact me or my Church Warden, Rachel Stowell, (numbers at the back of the magazine) and this can be arranged. There will be a suggested donation to cover the cost of the lily.

Other Easter plans at All Saints Church are

- 2 March, 7pm: Ash Wednesday communion
- Saturday 9 April, 10am and 12 noon: Easter egg hunt and activity morning in the churchyard (or in the church if raining!)
- 14 April, 7pm: Maundy Thursday service, remembering the last meal Jesus shared with his friends
- 15 April, 10.30am: Good Friday reflective service
- 17 April, 10.30am: Easter Sunday All Age Worship with communion

A new member of the All Saints Church team

Liz Dawes has joined while she trains to be ordained as priest. She started in September last year and will spend her 2 years with us. She studies Monday to Wednesday at Cuddesdon College in Oxfordshire and spends Thursday and Sundays with us in Horsford. She is enjoying helping at All Saints Toddler Group on a Thursday, coming to help with Collective Worship at Horsford Primary School as well as being involved in other Parish work. Liz is coordinating our new environmental group which is looking at how we can be more sustainable in our Parish (and at Felthorpe and Hevingham). If you are interested in joining this group to work on how the church and/or churchyard can be developed further ecologically and sustainably, let me know.

Services

Every Sunday 10.30am with parking at the Spice of India and mid-week communion every Tuesday, 10.30am, with parking at the rear of the church. Everyone welcome.

From the Registers

We welcome into the church family William and Esther Baker, William Cowan, Carter George, Rose Livermore

Funerals

Our prayers for the family and friends of Mary Barrett, Christopher Graves, Pamela Hilldrup.

Revd Margaret McPhee, Rector

HORSFORD CHURCH ROOM

Thank you for continuing to use Horsford Church Room. It's been so good to welcome regular groups back and to hear about the party's and other social events taking place.

Annual Meeting

Watch out for the date for this meeting when we invite you all to come and hear what has happened over the past year. What a year of ups and downs but the Church Room remains open thanks to Horsford villagers. For me 2021 will be remembered for your generosity, sponsoring me and Maggie to cycle and for Carole to walk every road in the village to raise money to keep the

Church Room open.

50 50 Club winners

Thank you to everyone who has joined or renewed their 50 50 Club involvement which helps to raise money for the Church Room. The monthly prize draw currently takes place at the monthly craft morning.

Our latest winners:

1st prize: October: Carole H November: Wendy T December: Maggie RH

2nd prize: October: Karen A November: Frances D December: Pat S

December Bonus Prize: Simon Byng

If you are interested in joining, it is just £12 every 6 months. For more details and an application form contact horsfordchurchroom@gmail.com

Revd Margaret McPhee,
Chair, Church Room Committee

HORSFORD METHODIST CHURCH

Well, Christmas and New Year are behind us and the spring with Easter beckons. With the continuing Covid situation, we are keeping to wearing masks during services and spacing appropriately. Unfortunately, due to the ages and health of some of our members, we are considerably down on our attendance numbers on Sunday mornings. Our remaining members are still planning for the future and we are joining with Trinity, Thorpe Marriott and Mile Cross for Bible studies and Lent Course. In July we will be open on Carnival Day for refreshments and that much needed toilet facility. We will also be on the field with a craft stall, so looking forward to meeting you all then too.

We would love to see our congregation grow and share the fellowship that we pride ourselves on here. We have always been a very welcoming church that is happy to try new ideas of being 'church', so why not give us a look on a Sunday morning, with our services at 10.30 and Communion on 3rd Sunday with our Minister, Rev Mary Sachikonye. This is a tricky time for us, with many decisions to make, but hopefully we can remain as a presence in the village for many years to come.

Thursday morning coffee group are enjoying meeting again after the holiday break and apparently my cheese scones are a winner. There is no charge for this, but if folks feel able, they can make a donation which covers costs and remainder goes to help our local Foodbank, run by Anna Green. This is a lovely opportunity to meet up with friends or make new ones. We are open from 8.50 - 12, so ideal to catch up after the school drop off.

Brownies and Rainbows are also resident in our building now, which is a joy for us and hopefully

PC PROBLEMS?

One to one support services, for businesses & home users.

AVAILABLE NOW!

Upgrades & repairs undertaken on desktops, laptops, game consoles, iPads & iPods!



FANTASTIC SPECIAL OFFERS:

- *Collection & return on repairs within the Norwich area!*
- *Refurbished laptops from £75!*
- *Advice given on repairs & upgrades!*
- *Laptop motherboard repairs from £35!*

Wanted for cash: your old laptops, iPods & game consoles!

£££

FREE health check on **ALL** computers, laptops, iPads, iPods & games consoles at our shop. All while you wait!

10% OFF

**REFURBISHED
LAPTOPS
& REPAIRS
WITH PRESENTATION
OF THIS VOUCHER.**

EXPIRES END JANUARY 2022

APC

Affordable Price Computers

*View all of our computers
on our website at:*

WWW.AFFORDABLE-PC.COM

TEL; 01603 867521 MOBILE; 07762 039656

*4 Cypress Close, Taverham
Norwich, NR8 6QG*

BB Installations

Construction, Restoration & Installation specialists

*Your local builder & installer, please check
the website for our client testimonials.*

- Windows, Doors, Fascia's, Soffits, Guttering
- Brickwork, Walls, Patios, Driveways
- Roofing, Ridge Repairs, Garages
- Conservatories, Garden Rooms
- Kitchens, Bathrooms, Wet Rooms
- Plastering, Tiling, Painting & Decorating
- Restoration & Renovation Projects
- New Builds, Extensions, Conversions
- Roof Windows, Dorma, Solar Energy



www.bbinstallations.co.uk

No job too large or small. Contact us for a free no obligation quotation from our fully qualified team of professionals

Email: sales@bbinstallations.co.uk

Telephone: 01603 898230 Mobile: 07780 964298

The Firs, 15 Buxton Road, Frettenham, Norwich NR12 7NG

SHOP NUMBER

130

ANGLIAN CARPETS
Magdalen Street NR3 1JD
01603 632600/1

..anglian carpets..
'A Family Store' Est 1984
Over 30 Years Experience

Free Fitting
Service within 20 mile radius
Free Planning & Estimating
SPECIAL OFFERS
All Year round

Our Estimator
Will Call
At A Time
Suitable For You
With All Your
Chosen Samples

Domestic & Commercial
We Offer A Home Choose Service!
We Can Beat Any Genuine Quote!

www.angliancarpets.com
angliancarpets@angliancarpetsltd.co.uk

Call Free On **0800 597 6871**

Or Visit Our Large Showroom At:
130 Magdalen Street, Norwich Tel: 01603 632600/1
Open 9-5pm Mon-Fri 10-4 Sat

New Electric Solutions

P
PART
Electrical safety

YOUR LOCAL ELECTRICIAN

- Electric Showers & Fans
- Electric Heating
- Fuse Board Upgrade
- Fault Finding
- Conservatories
- Security Lighting
- Extra Sockets/Lights
- Indoor/Outdoor Lighting
- House Rewires
- Part P Approved
- PAT Testing
- All work Guaranteed



For a free competitive quote call:
Rob Newsome (01603) 714715 Mob 07799 686 410
 Website: www.newelectricsolutions.co.uk
 Email: newelectricsolutions@hotmail.com

GUTTER & FASCIA CLEANING

S. BURTON CLEANING SERVICES

No need to buy or paint your tired Fascias,
 Guttering or Bargeboards...

...We can clean them to look like new!

- Guttering Cleared
- Conservatory Roofs Cleaned
- Window Cleaning Available
- Reliable Service • Competitive Rates

T: 01603 462509

26 Delane Road, Drayton, Norwich NR8 6DL

1300705

DAWN DRAKE

CURTAIN MAKING SERVICE

NORWICH 413717

*Loose Covers, Blinds, Swags and Tails
 All soft furnishings undertaken.
 Track supplied and fitted.*

FREE MEASURING and
 ESTIMATES
 PROMPT DELIVERY

410103

ZAK BRANCH LTD

professional tree surgery



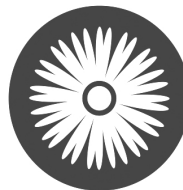
www.zakbranchltd.co.uk



TREE SURGERY



FENCING



LANDSCAPING



FIRE WOOD



info@zakbranchltd.co.uk



Tel: 01263 731926

Mob: 07510 048408

Taverham Vets

Taverham Vets, Fir Covert Rd, Taverham, Norwich. NR8 6HT
01603 867330
www.taverhamvets.co.uk e-mail: enquiries@taverhamvets.co.uk

- Lovely caring hand picked veterinary team!
- Great value veterinary care.
- Comprehensive "Pet Health" plan to spread the cost of routine health care and providing discounts on many other services.
- "RCVS Advanced Practitioners" meaning that referral to specialist centres is rarely needed.
- Canine Hydrotherapy underwater treadmill, Physiotherapy and Osteopathy available on site.
- Luxury boarding "Cat Hotel" run by veterinary nurses.
- Routine appointments Saturdays (9am-3.30pm) and Sundays (10.30am-3.30pm) for registered clients
- Late evening surgeries until 8pm Monday-Friday
- Key-hole bitch spays and cryptorchid castrates.
- Puppy and Kitten Packages.
- 24hour emergency care with discounted rates for health plan members with Norwich Night Vet.
- Vets and nurses on site 24/7 providing exceptional care for hospitalised patients
- Tours of the Practice available by request.
- Check out our reviews on Facebook and Google!



Welcome to Taverham Vets

£10

Taverham Vets would like to welcome you to our practice and offer you a £10 voucher to redeem off any services or goods at Taverham Vets.

Main Branch
Taverham Veterinary Practice
Fir Covert Road
Taverham
Norwich NR8 6HT
Tel: 01603 867330
E-mail: enquiries@taverhamvets.co.uk

Longwater Lane Branch
Longwater Lane
Cottessey
Norwich
NR8 5AH
Tel: 01603 747344

Taverham VETS

This voucher may not be exchanged for cash and is for new client registrations only. Minimum spend £35.
Not for use with Norwich Night Vet. Voucher Expiry 31.12.16

R A H Bannock MA VetMB MRCVS
G D C Pitcher MA VetMB CertVR CertSAO CertSAS MRCVS
T R A Robertson MA VetMB CertVDI CertVC MRCVS

Upgrade your old inefficient gas boiler to a new condensing high efficiency system



PLUMBING & HEATING Ltd

Your Local Corgi Registered Gas Specialists

Installation, servicing & repair of heating systems & gas appliances

Complete bathroom fitting

General plumbing repairs & maintenance

For a free quotation please call

01603 262465

APM BLINDS

MADE TO MEASURE QUALITY BLINDS SUPPLIED AND FITTED AT AFFORDABLE PRICES

**ROLLER. VERTICAL. VENETIAN
WOODEN VENETIAN.
ROMAN WOODWEAVE. PLEATED
CONSERVATORY/BLINDS**

**BLACKOUT BLINDS FOR VELUX WINDOWS
UNIQUE BLIND SYSTEMS FOR TILT AND
TURN WINDOWS
EXTENSIVE RANGE OF COLOURS AND
FABRICS AVAILABLE**

**PLEASE CALL FOR FRIENDLY FREE ADVICE
AND A NO OBLIGATION QUOTATION**

**TEL: 01603 891914
MOB: 07984 424272
EMAIL: andymillsey@yahoo.co.uk**

HORSFORD VILLAGE HALL

The Perfect Venue for any Private Function

Weddings, Birthdays, Christenings and More!!

- **Large Hall**
- **Kitchen**
- **Licensed Bar**
- **Ample Parking**
- **Stage**
- **Dance floor and Disco lighting!**

For more details and rates:

Website: <http://www.horsfordvillagehall.co.uk/>

or
call 01603 893900



PRONTO JOINERY LTD

Timber window and door manufacturer
For all your made to measure joinery
Glass and painting available
Visit our web site for more information



Contact us for a free quotation
Dog Lane Horsford
Norwich NR10 3DH
Tel 01603 890239
sales@prontojoinery.co.uk
www.prontojoinery.co.uk
Like us on Facebook



Repairs to double glazed windows, doors and conservatories

Local independent business

Free estimates, No call out charge

Steamed up windows, broken handles, hinges, replacement gasket, plus cat flaps, door panels and more

01603 520136 or 0800 1601932

sandcwindows@gmail.com www.sandcwindows.co.uk

Suzanne's Mobile Foot Clinic

Do you suffer from:

- Discomfort
- Corns
- Callus
- Fungal cracked heels
- Thickened nails or just wanting nails trimmed?

Professional treatments in the comfort of your own home

Contact Suzanne for treatment of foot related problems on
01603 261653 or
07771502197



Fully qualified health practitioner

Sarah's Dog Grooming



City & Guilds Trained

First Aid Trained

01603-927356 or 07786757371



Facebook Dog Grooming by Sarah@crowther78



C8430



SNB Plumbing and Heating

Hall Road Hainford

Oil, Gas and LPG Boilers,
Cookers, fires and water heaters.
Serviced, repaired and installed.
Including Residential Park Homes

Please call Karen or Steve on
01603 897235 or 07917807908
to book in your
job or for a free quotation.

email: steve@snbp.uk

TIM THE PLUMBER



Friendly & reliable service
No job too small



**Bathroom Installation, Maintenance
& General Plumbing Repairs**

Telephone 07881 478848
tim.newstead@btinternet.com

City & Guilds Qualified
Fully insured

PLS BUILDING & GARDEN MAINTENANCE SERVICES

DECORATING AND GARDEN MAINTENANCE
LAWNS & HEDGES CUT
PATIOS
GARDEN CLEARANCE AND LANDSCAPE

Tel: 01603 893505 Mobile: 07050 129 822

WINDOW CLEANER

FRIENDLY FAMILY RUN BUSINESS

(01603) 868014
07717 185767

MOST QUOTES CAN BE
GIVEN OVER THE PHONE

GUTTER CLEANING

FREE CAMERA SURVEY

WE ALSO CLEAN FASCIAS AND
CONSERVATORY ROOFS

CALL FOR A NO OBLIGATION QUOTE

(01603) 868014

420405

(Peter J. Wright - est. 1985)

Painting & Decorating

Professional Painter & Decorator

• Exterior & Interior Painting & Decorating

 Norfolk County Council

• Wall Paper Hanging



Norfolk
Trusted Trader
Member

FREE Estimates - Fully Insured

For a friendly service at a competitive price...

Telephone Peter on:

01603 488796

2, Three Corner Drive, Old Catton, Norwich NR6 7HA

WATERWAYS

PLUMBING SERVICES

All General & Emergency Plumbing Work

**General Plumbing • Leaks • Overflows
Burst Pipes • Showers • Pumps • Toilets
Taps • Bathroom Refurbishments • Tiling**

**LOCAL & FAST RESPONSE
FREE QUOTES - 20% O.A.P DISCOUNT
CITY & GUILDS QUALIFIED
FULLY INSURED**

**24 Hour Service • 365 Days a Year
No Job Too Small**

*A reliable and trustworthy domestic plumbing
service, offering competitive prices, with ALL
work fully guaranteed.*

01603 261559 / 07795 807244



WINDOWS | DOORS
BIFOLDING DOORS
PORCHES | FASCIAS
CONSERVATORIES
& MORE

FREE QUOTATION
NO SALESMEN
10 YEAR GUARANTEE
NO OBLIGATION

Enhance your home and enrich your life with home improvement products from BBH

CALL US FOR A FREE QUOTE
01603 897350

www.bbhltd.co.uk f bbhltd t bbh_ltd i bbhltd




KEVIN GRAY DECORATING

Professional Decorating Services

Best quality work including:-

- Interiors
- Exteriors
- Wallpaper hanging
- Hand painted kitchens and furniture
- Wall spraying
- Fully insured
- Free estimates



Email: kevin.gray40@gmail.com

Website: www.kevingraydecorating.com

7 Marigold Close, Horsford, NR10 3SN Tel: 07879 612700



SHOWROOM AT:
Units 9-10 • 251 Holt Road • Horsford • Norwich • Norfolk • NR10 3EB

TRUSTMARK Government Endorsed Quality FENSA APPROVED GGF Glass and Glazing Federation



1st Class Aerials

07725 182952

New TV Aerials / Repairs
Freeview / Sky / Free Sat
Extra TV points
HD over Ethernet

B. J. DENNIS & SON

"Britain's Favourite Plumber Award" – County Winner

Established in 1973

GAS & LPG ENERGY SAVING BOILERS AND FULL CENTRAL HEATING INSTALLED
BOILER SERVICING AND POWER FLUSHING CARRIED OUT BY CERTIFIED ENGINEERS

ALL WORK FULLY GUARANTEED

TELEPHONE: 01603 897 297 / MOBILES: 07970762149

www.bjdennisandsonheating.co.uk

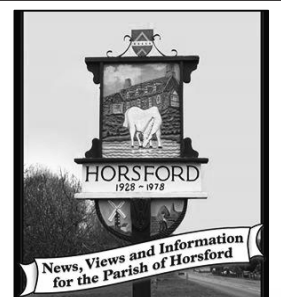


2 THISTLEDOWN ROAD, HORSFORD, NORWICH, NR10 3ST

THE Horsford News

- Need to stand out from the competition?
- Starting up a new business or promoting an existing one?
- Need quality exposure at competitive prices?

Advertise locally - advertise here!



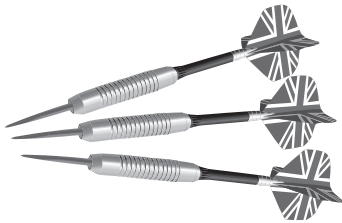
Choose from many styles including this new banner format!
Contact Lisa Starling - Editor 01603 891902



Carmichael's Trophies

109 Magdalen Street, Norwich
Tel: 01603 624368

Trophies and Engraving for all sports
Darts and Accessories
First Class Engraving Service
Quotations Given



Prop: David & Stuart Willimott

IF ANYONE WANTS TO INCLUDE A
STORY, PERSONAL VIEWS OR
SIMPLY A THANK YOU
IN THE HORSFORD NEWS

PLEASE CALL LISA
ON 891902

Call

Boiler and Electrical Technician

*Service and breakdown repairs to oil and
gas boilers. Electrical work undertaken*

CORGI Registered Gas Installer

Telephone: (01603) 261653

Mobile: 07990 520349

580103

WEB www.alancookfs.co.uk

EMAIL alan@alancookfs.co.uk

9 Market Place
Aylsham
Norfolk
NR11 6EH



Alan Cook

FINANCIAL SERVICES

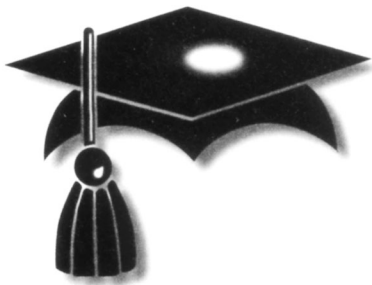
- Portfolio Reviews
- Retirement Planning Advice
- Investments & Savings
- Long Term Care Planning
- Protection & Insurance
- Inheritance Tax Planning

Contact our office now for your initial portfolio review at our cost.

OFFICE **01263 732309**

MOBILE **07900 816927**

Tax planning advice is not regulated by the Financial Conduct Authority. Alan Cook Financial Services Ltd is an appointed representative of 2plan wealth management Ltd. It is authorised and regulated by the Financial Conduct Authority and entered on the FCA register under reference 919924. Registered in England and Wales under number 07115716. Registered address: Summerhill House, 1 Sculthorpe Road, Fakenham, Norfolk, NR21 9HA



School Garage Felthorpe

THE STREET, FELTHORPE, NORWICH NR10 4DG

MOTORCYCLE MOT TESTING NOW AVAILABLE

M.O.T Testing

Tyres

Exhausts

Servicing

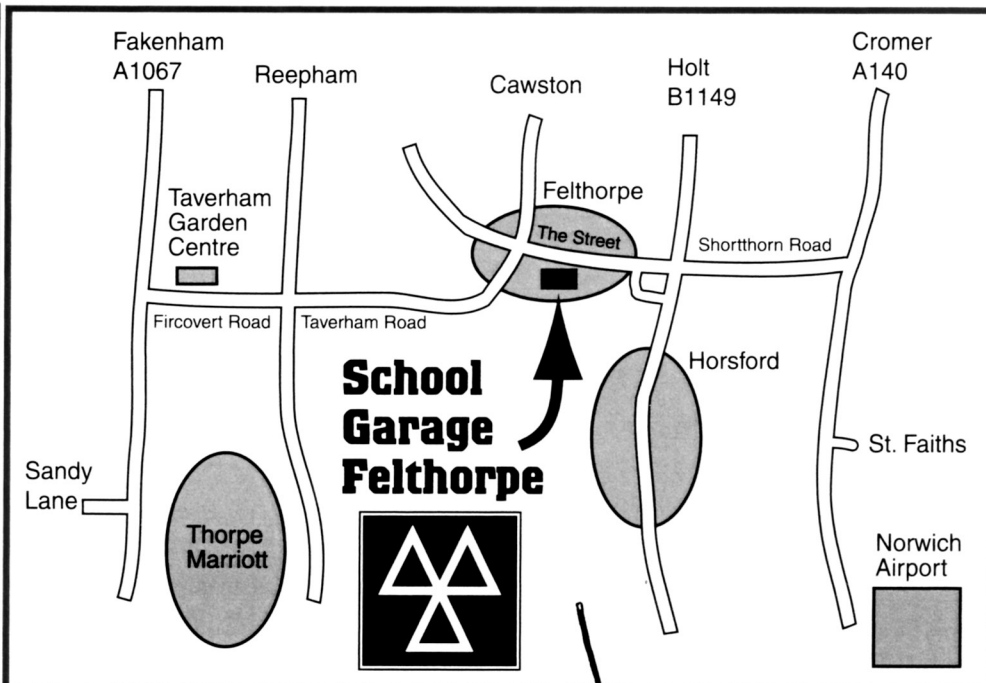
Repairs

**Air Con
Servicing**

LIGHT COMMERCIAL VEHICLE SALES
Class 4 cars ♦ Class 7 commercials
Diesels tested ♦ Catalysts tested

**MOT'S
WHILE
YOU
WAIT!**
**BY
APPOINTMENT**

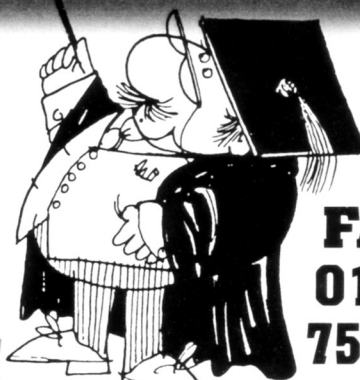
**FREE
COURTESY
CAR**
WHEN AVAILABLE



01603 754272
01603 754232

**ALL MAKES OF CARS AND LIGHT
VANS SERVICED AND REPAIRED**

...it's just around the corner!



**FAX:
01603
754274**

Waggamut Cut



- 🐾 Dog Grooming & Styling
- 🐾 City & Guilds trained

**To book an appointment
contact Debbie CAPG
01603 897403 or 07906 440556**

K.D. Rivers Ltd.

BUILDING SERVICES
For all your Building Requirements
(Established 1993)



*Specialists in Carpentry, Windows
Doors Conservatories, Extensions
Facia & Guttering and all
General Home Improvements*

Call now for a free quotation on:

Tel: 01603 409694
Mobile: 07885 810822
Email kdriversltd@gmail.com
Website www.kdriversltd.co.uk



www.facebook.com/KDRiversLtd

BROADLAND PROBATE SERVICES LTD

- Wills
- Inheritance Tax planning to include Trusts
- Administration of Estates
- Lasting Power of Attorney deeds
- Registration of Lasting and Enduring Power of Attorney deeds
- Court of Protection work

FREE DOCUMENT STORAGE / NO VAT PAYABLE

**Home visits on request - Evening and Saturday appointments available
Friendly and professional service from a fully qualified and experienced Lawyer**

MICHAEL YOUNG FCILEx 01603 717175

www.broadlandprobateservices.co.uk

Horsford Bowls Club

**Enjoy a friendly game of bowls and
drink at our clubhouse
Also various social activities
throughout the year**

**Membership enquiries for beginners
or experienced players**

Contact: Malcolm Makins, 8 Warren Close, Horsford, NR10 3SU
Telephone: 01603 891422 (Secretary)

James Electrical & Property Services



**Electrician Carpenter
Kitchen Installations**



Car Charging Points
01603 339066 / 07557025890



www.jameselectricalnorwich.co.uk



www.napit.org.uk



National Association of Professional Inspectors & Testers

PETER STANGER - ELECTRICIAN

Installations:- showers, sockets and lights
Repairs to fridges, cookers and heaters
Single point to complete rewire

Free Quotes

Tel: 01603 261735

Mobile: 07887 781762

9 Layton Close, Drayton, NR8 6EB



THE INSURANCE CENTRE

EST: 1985

INDEPENDENT INSURANCE BROKERS

*A Local Office
for the Local Community*

ALL TYPES OF INSURANCE TRANSACTED

**MOTOR • HOME
COMMERCIAL • TAXIS**

8 - 10 CROMER ROAD, NORWICH NR6 6ND

TEL 01603 400755

1470406

T DACK

ARTEX - COVING
RE- BOARD - PLASTERING

HONEST, RELIABLE, CLEAN SERVICE

REPAIRS / INSURANCE WORK

FREE QUOTES

TELEPHONE

01603 710325

07944 963886

Airport Chauffeurs  UK .com

AIRPORTS • SEAPORTS • LONG DISTANCE

1 to 8 Seats • Cars • MPVs • Minivans

**LUTON • HEATHROW • SOUTHAMPTON
STANSTED • GATWICK • DOVER**

CHAUFFEUR DRIVEN AT TAXI PRICES

0800 783 9030

Email: norwich2airports@msn.com

ILLUSIONS HAIR SALON



LOCAL PROFESSIONAL HAIR SALON
FOR ALL ASPECTS OF HAIRDRESSING

AT ILLUSIONS YOU WILL RECEIVE AN
INDIVIDUAL AND STYLISH SERVICE IN A
MODERN AND FRIENDLY ENVIRONMENT

POPPYFIELDS, HORSFORD, NR10 3SR
01603 890552



FLS

HAVE NOW BEEN APPOINTED AS A
MAIN STOCKIST FOR STIHL AND VIKING
IN NORFOLK

STIHL[®]

APPROVED DEALER

VIKING[®]



Church Lane | Felthorpe | Norwich NR10 4DP
Tel: 01603-754890

FELTHORPE LAWMOWER SERVICES
felthorpelawnmowers.co.uk

1170105

Garden Maintenance, Landscape & Fencing Services

- Bespoke gates made to order
- All types of fencing supplied and erected
- Hedge cutting and removal
- Turf supplied and laid
- All types of hard landscaping
- Walls, patios, brickweave, shingle drives etc.
- Mini and wheel digger work undertaken
- Garden and garage clearances

FREE Estimates phone Steve on:

01603 755280

or

07808 960784

www.sjlandscapingandfencing.co.uk



Home Improvements

- **Kitchens**
- **Electrics**
- **Bathrooms**
- **Plastering**
- **Decorating**
- **Fencing**



Mark 07850 110817
Paul 07910 037319

mphomeimprovements@outlook.com

ROBERT T. SMITH

PAINTER & DECORATOR

Interior Exterior

Quality
Wallpapering

Quality
Workmanship



EST.1977

Friendly, Professional & Reliable Service

6 LAVENDER CLOSE, THE SHRUBLANDS, HORSFORD, NORWICH NR10 3EW

Tel: 01603 897372



Pilates in Horsford

Mat based classes for Mixed
Ability & Beginners.

Head to
emmapowerpilates.com
to book yourself a class!

Monday:

Mixed Ability 5.30-6.30pm

Beginners 6.45-7.45pm

Tuesday:

Mixed Ability 9.30-10.30am

Beginners 10.45-11.45am



Simply Ballroom & Latin Dancing



Professional Tuition by Sally A. Smith
IDTA Qualified

- ❖ 1-2-1 Beginners to Advanced lessons
- ❖ 6 Week Beginners course
- ❖ Wedding First dance tuition
- ❖ Weekly classes



www.ballroomdancingnorfolk.co.uk - Tel. 01603897372



THIS
GIRL
CAN

With
BODY CONTROL
PILATES®



What are you looking for from your dentist?

- A dentist who spends time listening to you and doesn't rush you out of the door
- Friendly staff and a relaxed environment • Gentle Experienced Hygienist
- One that offers dental payment plans to help you budget for your dental care
- One that understands if you haven't seen a dentist for a while
- Free parking • A practice for the whole family
- Free educational pack given to children at their first appointment

Well - you've found one here at Horsford Dental Practice.

We realise our patients are individuals and have their own unique requirements.



Dr Russell Wigglesworth BDS • Dr Nita Wigglesworth BDS

01603 898002 94 Holt Road | Horsford | Norwich
www.horsforddentalpractice.co.uk | admin.horsforddentalpractice@btconnect.com



Denplan Limited, Denplan Court, Victoria Road, Winchester, SO23 7RG, UK. Tel: +44 (0) 1962 828 000. Fax: +44 (0) 1962 840 846. Part of Simplyhealth, Denplan Ltd is an Appointed Representative of Simplyhealth Access for arranging and administering dental insurance. Simplyhealth Access is incorporated in England and Wales, registered no. 183035 and is authorised by the Prudential Regulation Authority and regulated by the Financial Conduct Authority and the Prudential Regulation Authority. Denplan Ltd is regulated by the Jersey Financial Services Commission for General Insurance Mediation Business. Denplan Ltd only arranges insurance underwritten by Simplyhealth Access. Premiums received by Denplan Ltd are held by us as an agent of the insurer. Denplan Ltd is registered in England No. 1981238. The registered offices for these companies is Hambleden House, Waterloo Court, Andover, Hampshire SP10 1LQ.

NORDIC WALKING

It's a full body workout with huge health benefits!



Weekly sessions from
Longdale Park in
Thorpe Marriott
FREE TASTER SESSIONS
Book online at
www.norfolksnordics.com



Hatha Yoga Classes

Suitable for all levels

Classes every Monday, Wednesday & Thursday
7:00-8:15pm

Trinity Church, The Square, Acres Way,
Thorpe Marriott, NR8 6XE

Massage, Healing Therapies and private
1-2-1 Yoga also available.

Contact Rachel to book: 07793 279567
www.mycalmthecity.co.uk rachel@mycalminthecity.co.uk



EASTERNHEAT

PLUMBING & HEATING SERVICES

If you are looking for a local, reliable, knowledgeable, top quality Gas Safe central heating engineer, then look no further.

- Boiler, Radiator and Cylinder Replacements
- Gas Appliance Servicing and Repairs
- Home Buyers Pre-Purchase Survey
- Central Heating System Repairs
- Bathroom Installations



Tel: 07846 686217

Head Office: Horsford

Email: info@easternheat.co.uk

Website: www.easternheat.co.uk

WINTER BOILER SERVICE OFFER:

£10 discount for NR10 residents with code: NR10SERV10

PC PROBLEMS?

Local Friendly Service!

Computer running slow?

Computer won't start?

Software not working?

Virus or spyware trouble?



Hardware upgrade?

Data backup?

Computer terrified?

Just need advice?

No Fix
No Fee

We come to you!

No Call
Out Fee

www.LINCcomputers.co.uk

Call 0798 9999 390 or Email Info@LINCcomputers.co.uk

OAKWOOD
Building Developments



'With over 20 years experience Oakwood Building Developments can offer a wide range of services including new build, renovations, extensions, kitchen fitting along with all carpentry & joinery requirements.'

Contact Tom on Mobile 07507 648944
Or Steven on Mobile no: 07810 123448
Landline 01603 898854
Email: oakwoodbuildingdevelopments@gmail.com

*The Sewing
Lady*

*Based in Horsford
No job too small!*



*A repair and
adjustment service for:-*

- ❖ *Home furnishings*
- ❖ *Clothing*
- ❖ *Curtains*

Contact me:- 01603 322929 / 07788726117
Caravantd10@sky.com.

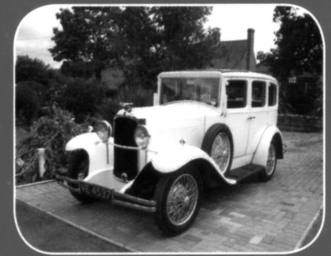
FLOWERS BY NATALIE

A local professional florist with over
twenty years floristry experience

VINTAGE CAR HIRE

T. 01603 873309
M. 07776 420317

Cawswood, Holt Road
Cawston, Norwich NR10 4HP



EASTERN COUNTIES ACCESS SOLUTIONS WORK AT HEIGHT SAFETY CENTRE

Eastern Counties Access Solutions is a trading name of Eastern Counties Scaffolding Services Limited

Tel: 01603 735130 – Fax: 01603 722844

e-Mail: enquiries@ecaccesssolutions.com – www.ecaccesssolutions.com

DON'T TAKE RISK WHEN WORKING AT HEIGHT



Difficult access problem e.g. over a conservatory

Contact us for a solution and free advice - **01603 735130**

We provide all Work at Height Safety equipment for Hire or Sale:

- Ladders / Step Ladders / Specialist Ladders / Loft Ladders
- Mobile Scaffold Towers - **(SPECIAL OFFER £35 / WK) + VAT**
- Purpose Built Scaffold
- Cherry Pickers (Aerial Access Platforms)
- Safety Harness
- Roof Edge Protection
- Mobile Man Anchors

WE ARE ALSO AN APPROVED TRAINING CENTRE FOR WORK AT HEIGHT SAFETY



NASC

PASMA



United

DRIVING TUITION EST 1995

WWW.UNITEDDRIVINGTUITION.CO.UK

11 Green Park Road Horsford, Norwich, NR10 3DT

T: 01603 897648 M. 07888684150 E: info@uniteddrivingtuition.co.uk

- Advanced
- Flexible Lesson Times
- Refresher Courses
- Advanced Courses
- Motorway Tuition
- Pass Plus Course
- Intensive Course (subject to availability)

CHRISTMAS AND BIRTHDAY GIFT VOUCHERS AVAILABLE

THINKING OF BECOMING A DRIVING INSTRUCTOR?

GET IN TOUCH.....FRANCHISE DEALS AVAILABLE



Chimney Sweep

Jones the Sweep

STOVES, OPEN FIRES & SOLID FUEL APPLIANCES

- Fully insured
- Trained by a Guild professional
- Tidy, clean and efficient
- All work certificated



Certified Member



Telephone Harry on 01263 833362 or Mobile 07799 484012

M.G.D. Tree & Conifer Surgery

CAN'T SEE THE WOOD FOR THE TREES?

Tree & Conifer Surgery
Felling
Crown Reduction
Trimming
Ground Clearance

Free Estimates
Competitive Rates
Fully Insured
N.P.T.C. Certificates

CALL MARTIN TODAY

Mobile 07751 890519

Telephone 01603 755188
or 01603 423056



THE METICULOUS MOVERS

Woodland Farm, Shortthorn Road, Stratton Strawless, Norwich, NR10 5NU

Telephone : 01603 898679

E-mail : enquiries@ollands.com

Website : www.ollands.com

- **Secure Storage Facilities**
- **Household & Commercial Removals**
- **Professional Packing Service**
- **Single Items / Part Loads available**
- **European & Worldwide Shipping**



APOLLO CLEANING

Carpet and Upholstery Cleaning Specialists

Established 1991

Latest truck mounted
equipment for
**DEEPER CLEANING &
FASTER DRYING**
Pure water window cleaning

Stuart Thomson, 13 Berrington Road,
Hellesdon, Norwich NR6 6PH

Tel: 01603 423039

Mobile: 07770 811912

www.apollocleaners.co.uk

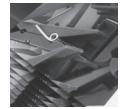
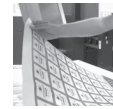
Bringing colour to life

Magazines &
Newsletters

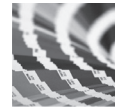
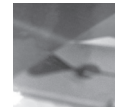
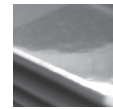
Corporate
Stationery



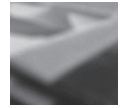
Design &
Marketing
advice



Information &
Presentation
Folders



FSC Certified



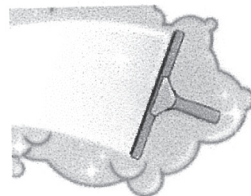
We specialise in most types of work from high
quality product brochures, sales flyers, leaflets,
magazines and folders through to business
stationery.

ColourPrint
quality litho & digital printers

www.col-print.co.uk

t: 01603 488 001

e: sales@col-print.co.uk



SPARKLE WINDOW CLEANING SERVICES

LOCAL DOMESTIC WINDOW CLEANER INCLUDING FASCIAS & CONSERVATORIES
INTERIOR & EXTERIOR WASHED PROFESSIONALLY

TRADITIONAL OR WATER FED POLE SYSTEM

FULLY INSURED, RELIABLE & FRIENDLY

FOR MORE INFORMATION CONTACT DEREK
(01603) 897811 / 07796 008452

NORFOLK PLUMBING

Domestic Installation & Repairs
Emergency calls welcome



Bathroom & Kitchens

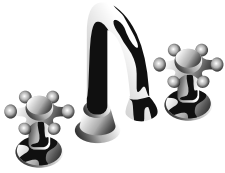
- Basins
- Toilets
- Baths
- Showers
- Tiling

Heating

- Radiators
- Powerflush
- Pumps
- Cylinders

Repairs

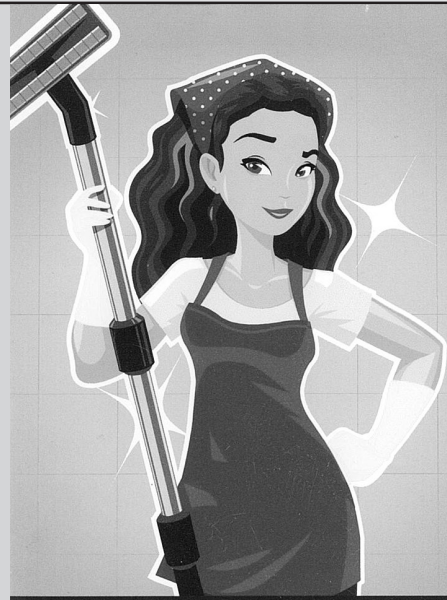
- Blocked drains / Jetting
- Leaks
- And more...



Alan Cooper

Telephone: 01603 734253

Mobile: 07950 471139



B-CLEAN

Cleaning Services

**HOOVERING - DUSTING - TIDYING
MOPPING FLOORS - MAKING BEDS
WASHING DISHES
GENERAL HOUSEWORK**

Call Amanda for a quote
or look for us on Facebook

07989 794078

BCLEANCS@gmail.com



RENOVATE OR SIMPLY UPDATE
IN AS LITTLE AS A DAY

Over 100 combinations of
made-to-measure doors

Transform your kitchen by replacing your existing doors and drawer fronts with our extensive range of stylish, made-to-measure designs. With over 30 styles and over 90 colours there is an almost endless choice of permutations. Our contemporary, classic and traditional designs look just as good in bathrooms and storage areas.

“ We were impressed by the quality of the kitchen doors and associated fittings and by the high professional standard of the installation. ”

Free installation on all door orders received by the end of July

HOLT SHOWROOM: **01263 712362**

7 Appleyard, Holt, NR25 6AR

NORWICH SHOWROOM: **01603 755019**

Unit 2a Woodland Park Ind Est, Shortthorn Road
Stratton Strawless NR10 5NU



Alabaster

Shaker

Verona

Matt Dakkar

London
Concrete

Alabaster

Matt Denim

Lissa Oak

Matt Graphite

GRANITE
transformations

KITCHEN & BATHROOM MAKEOVERS



JERRY MARCH

FUNERAL SERVICES ESTABLISHED SINCE 1840

Perfect Choice
FUNERAL PLANS

28 Holt Road, Horsford, NR10 3DD

01603 898202 (24hrs)

enquiries@jerrymarchfuneralservices.co.uk

*Small independent family business established for over 180 years
Private woodland Chapel of Rest*

Some of the services we offer are:

- ❖ *Pre-paid funeral plans*
- ❖ *Floral tributes & memorials*
- ❖ *A fully bespoke funeral tailored to your wishes*

www.jerrymarchfuneralservices.co.uk



With Jo & Sam

EXERCISE CLASSES FOR THE OVER 50s

HORSFORD VILLAGE HALL

TUESDAYS – 1PM

£5.00 PER CLASS - BOOKING IS ESSENTIAL

THE SESSIONS ARE SET TO GREAT MUSIC AND INCLUDE;
FLEXIBILITY, AEROBIC, STRENGTH AND BALANCE EXERCISES

COME AND HAVE SOME FUN WHILST GETTING STRONGER AND FITTER

WE ALSO HAVE CLASSES IN OTHER LOCATIONS
FOR MORE INFORMATION OR TO BOOK YOUR PLACE CALL:

JO: 07941 086603 OR SAM: 07925 602862

ALL COVID-19 SAFETY MEASURES ADHERED TO

FABS
Flexibility | Aerobic | Balance | Strength



Now only
£895*
for a fully
fitted electric
garage door.

WAS £1,354 INCLUDING VAT.

Gotta get a Garolla.



WHAT'S INCLUDED WITH EVERY DOOR:

- FREE EXPERT MEASURING & FITTING
- 2 REMOTE CONTROLS
- ACOUSTIC & THERMAL INSULATION
- FREE DISPOSAL OF YOUR OLD DOOR
- AVAILABLE IN 21 COLOURS

Garolla garage doors are expertly made to measure in our own UK factories, they're strong and solidly built. The electric Garolla door rolls up vertically, taking up only 8 inches inside your garage, maximising valuable space.

Give us a call today and we'll come and measure up completely **FREE** of charge.

GAROLLA
ROLLER
SHUTTER
DOORS

www.garolla.co.uk

CALL US TODAY ON:
01603 905 308
MOBILE:
07537 149 128

LINES OPEN 7 DAYS A WEEK

*Offer valid for openings up to 2.6m wide & including 2 remote controls, 55mm white slats, internal manual override.

WE WELCOME EVERYONE AT HORSFORD SOCIAL CLUB

The Social Club has been running in the village of Horsford since 1993. It was started by a few friends putting a few pennies together to run a social evening behind the bar in the village hall.



Since then, the social club has evolved to what it is today.



Horsford Social Club is organised by committee members who all volunteer to help keep the social club running for all to visit. Anyone interested in joining the committee are welcomed with open arms, as does anyone who wishes to help, but without the commitment.



The Social Club promotes itself as a place where everyone is welcome.



Literally everyone... You, your children, your neighbour, your family that are visiting for the weekend.

All children welcome, whatever age and whatever time of the day. Secure play area available.

You never need to worry about the babysitter again!!

We have entertainment on Saturday evenings. Children's Events at Easter and Halloween and even the Christmas Party for the children of our social club to meet the big man himself - Father Christmas. Along with the children's gatherings and Saturday night bands, the Social Club runs annual events to London to see the top West End Musical Productions, Race days, Golf days and many more trips.

Details of all events are always on the notice board and social media.

As we are a social club, there is a membership fee on an annual basis, but you ask any member and you soon get your money back on the cheap(er) drinks. You'll even get change from a fiver!!



CHECK THIS OUT!

LIKE & WATCH THE
HORSFORD SOCIAL CLUB
FACEBOOK PAGE FOR
MORE INFORMATION



DO WE HAVE YOUR ATTENTION NOW?
IF SO COME AND CHECK US OUT, AND REMEMBER -

MORE SOCIAL, LESS MEDIA!!

Look out for further

details

Men's & Ladies Darts Teams
Tuesday Poker Nights
Pool Teams
Local football teams
Sky TV & BT Sport

OPENING TIMES

Monday	17:00 - 23:00
Tuesday	17:00 - 23:00
Wednesday	17:00 - 23:00
Thursday	17:00 - 23:00
Friday	17:00 - 23:30
Saturday	14:00 - 23:30
Sunday	12:00 - 23:00

BECOMING A NEW MEMBER
If you would like to join the social club, please feel free to drop in and ask for a joining form.
Or alternatively email horsfordsocialclub@hotmail.com
Under 18's free, junior membership available (16-18)
Take advantage of the membership offer and join for £15 until 2021.

AKS

SKIP HIRE SERVICES LTD

Rossfield Reepham Road Horsford NR10 3AL

*Recycling 100% of all
of our waste*

aksskiphire.co.uk

-  Local skip hire you can trust
-  Book 24/7 via our website
-  Same day or next day delivery



01603 789555

Big enough to deliver - Small enough to care

they will feel able to join us when we have special services and events.

Our church building is available for hire and we have a fully equipped kitchen, 2 toilets with one having facilities for all abilities, a hall and further room with tv. If you would like to hire us for a regular group or one off meeting, please contact me on the number below.

We pray that you all manage to stay as safe and as well as possible whilst continuing to lead a fulfilling life.

Kim Pike

(kimpike03@gmail.com 07392 918581)

UNIFORM BANK

Our Uniform Bank is growing without even trying, having received more items from school which I have to find a home for! We have a wide range of clothing for Horsford schools and with many other schools having basic black or grey for trousers, skirts etc., we can accommodate those too Please make use of this facility, whether you are in need or just don't like to see waste and could do with spares. Don't forget, those brand new items that your children put on for the first time look lovely, but don't stay like that for long. Why go to that expense, just to be disappointed in a week or two when they come home with paint on or holes in the knees. There is no charge, but any donations that you can make for Horsford Foodbank are greatly appreciated. We have a few pairs of shoes and plimsolls as well as tights etc, so why not come for a rummage on a Thursday morning between 8.50 - 12 and grab a coffee at the same time. If this is not convenient, drop me a line and I will check availability and can organise drop off. Uniform is stored at Horsford Methodist Church, next to the village hall car park.

Kim Pike

(kimpike03@gmail.com. 07392 918581)

HORSFORD SOCIAL CLUB

Really nice to report that we had a good Christmas and New Year with many members and their guests using the club for the first time since the lockdowns began. Lots of members joining in the Christmas festivities who have supported the club throughout all the hard times over the past months. We apologise that the children's Christmas party was cancelled but unfortunately, we did not have enough children to make the party viable. Hopefully next year this will go ahead without any issues. Thank you to The Haze who played on New Year's Eve and reduced their cost so the evening could go ahead and was enjoyed by all who attended. Let's hope we can now move

forward in 2022 and start to have more bands and other events without any more restrictions. The membership for the club is coming round again in April so letters will be dropping through your doors in March to renew your membership. We have held the membership for the past two years, so every member got the benefit of a year on their membership with all the closures. The renewal fee is staying the same at £15 per adult, £10 OAP's. We have had a lot of new members join in the past year which is very encouraging seeing the numbers increase in such difficult times. Again, we must thank the landlord - Village Hall Management Committee for freezing our rent while we were forced to close over lockdowns. It is without doubt we would not have still been open without their support. Moving on we have a few things in the pipeline for 2022. Bands are listed below and there will be more bookings as the year unfolds. Keep your eye on the clubs Facebook page and the boards outside the club advertising the events coming up. The outside garden area is now in hand to be revamped with plans we have had in place for a while can now go ahead. Due to restrictions, we have had to wait for better times for volunteers and committee to start the work and make this a nice area for the summer. Thanks must go to the committee and bar staff for keeping the club afloat with all the restrictions, government guidelines, paperwork, ordering, sorting the furlough payments, looking after the cellar and generally keeping the club running without customers! We could not just lock the doors and wait for the lockdowns to stop. Due to the bank holiday changes at the end of May we are moving the beer festival, so it doesn't collide with the Jubilee celebrations. We are looking at events for this historic weekend and will be advertised nearer the time. We will be bringing back the popular Quiz night in Feb/March and adding to this evening there will be food available to purchase which will be cooked onsite by our resident chefs. We have had an evening recently of Pizzas cooked to order which was very successful. We held our January monthly meeting last night and it was enjoyable to discuss 2022 without the threat of closures and not knowing what was in store for the forthcoming months. Sadly, we were told of the passing of one of the original members of the Social Club just before Christmas, who helped to start the club nearly 30years ago. Condolences go to the family of David Taylor.

Future Entertainment

Sat 12th Feb – Sons of Mark

Sat 26th March – 2 Knights Young

Sat 16th April – Addictive Mix (Easter weekend)

Sun 17th April – True Colours (Easter weekend)

Sat 30th April – Coyote Karaoke

Keep an eye on the facebook page for any updates and information. We hope you all had an enjoyable Christmas and New Year and look forward to seeing all members current and new soon. If you have any queries or questions please email us on horsfordsocialclub@hotmail.co.uk

Jackie Carter
Social Club Secretary

HORSFORD AFTERNOON WI

This is my first opportunity as President to wish you all a very Happy New Year. I took over from Penny as President at the end of last year which was a new beginning for all of us as we started to have our indoor meetings again after a very strange time dealing with the pandemic. Before anything else, I would like to thank Penny for all her hard work as President and I am glad she is still going to be involved with our WI.

Although we had held some outdoor get togethers last year, it was good to be back indoors in the village hall. We had a wonderful demonstration from Crystal Dyball showing us how to make Christmas decorations with flowers and interesting greenery. We also held a gift sale which everyone enjoyed. We welcomed six new potential members which was exciting because we have not been able to do this for such a long time.

Whilst all of this was so very positive, sadly we took the decision not to hold our January meeting because of the huge increase in cases of the Omicron variant. We do everything we can to keep our members safe – chairs are set out with social distancing in mind and we encourage everyone to wear masks, recognising that some people are unable to do this for medical reasons. However, we felt it was better to be cautious and hope we will be able to start again in February.

We always welcome new members and if you would like to join us it would be a good idea to telephone me beforehand on 01603 710306 if you are thinking of coming along for the first time. Our meetings are on the first Wednesday of the month at Horsford Village Hall and start at 14:30. We do ask people not to arrive before 14:15. We have a wide range of speakers talking to us on topics ranging from beekeeping to skin care and look forward to welcoming you as soon as we can.

Gill Gauntlett
President
Horsford Afternoon WI

THE HORSFORD PLAYERS

A BIG thank you to everyone who came to see "Sleighed to Death". You seemed as pleased to see us as we were to see you! It is so rewarding to produce a play that is so well received. The number of people through the doors each night was wonderful. "Sleighed to Death" was a really fun play to do. Our sides ached with laughing so much during rehearsals, it was so gratifying to see and hear our audiences enjoying it too. They loved Sargent Pratt's hopeless attempts at magic, as well as his clueless attempts at trying to work out whodunnit. It was a good job he had his trusty sidekick, PC Potter, to save the day!



PC Potter, in her fairy/angel costume looks on as Sgt Potter, dressed as Santa, greets Uncle Archie, who's just back from Australia.



Part of The Incredible Puzzled Pratt's magic show - "pick a card - not that one!"

2022 sees our 60th year of The Horsford Players. We're on the hunt for something spectacular to perform to celebrate this momentous occasion. We will let you know our plans as soon as they're agreed, so watch this space, as they say.

If you would like to join our very merry crew, either on-stage, behind the scenes, or front of house, you will be made very welcome. We meet on Thursday nights, so please contact me, or any other members of our group for more information.

Sandy Kerridge
Chairperson, The Horsford Players
sandykerridge@hotmail.com
01603 891305

JOHN NORMAN KEEPING

JOHN NORMAN KEEPING has passed away peacefully at home, at the good age of 97 on 9th January. A member of Horsford Methodist Church, he could be seen in later years around the village on his scooter and would often talk to folk about his faith. He loved helping, with his wife Ellen, at 3 in 1 Club and engaging with the children. A true and kind soul, will be greatly missed by all.

HORSFORD BOWLS CLUB SANDY LANE, HORSFORD

After a very stop / start year 2022 seems to be settling down to more normal ways. Although virus rates are still high we are coming to accept we have to live with it. Our short mat teams are enjoying a full season and the Gold team is currently top of the City League, but the Blue and Bure League teams are finding it very challenging.

Our social activities are now going ahead and we had a very successful Christmas party in December when about 60 members and friends enjoyed the evening as it was our first one since lock down. We are planning our Valentines party for February and we have a full programme of other events throughout the coming year, subject of course to national guidelines.

Our outdoor green is looking in excellent condition and thanks to Steve for his work over the winter to keep it that way. We have had a problem with moles and we had to raise two of the green edges during the Autumn because of their tunnelling and we hope this resolves the situation.

Our membership remains fairly good with a few leaving and some new players joining but overall membership is a little down at the moment. If you are considering joining a very successful club now is an ideal time as our membership runs from March to February. We can promise you plenty of games, good company and a place to make good and lasting friendships.

John Bugg (Club Chairman)
Telephone 01603890633
Mobile 07443861507
E Mail jfbe0940@gmail.com

KNIT WITS

Happy New Year from Knit Wits.

Who are we?

We are a knit and natter group which meets every third Thursday of the month in the Methodist Church between 1.30 and 3.30pm

Why not come and join us for some knitting, crochet and sewing or if you would like to learn we are here to help.

Knit Wits is affiliated to the Norfolk Knitters and Stitchers who have similar groups throughout Norfolk and also Wool lofts where discounted wool, material and free patterns to make for charity are available.

Some of the things we have knitted are warm woolly hats and jumpers, blankets and toys either for children or animal charities. However you don't have to knit or sew for charity!

Hope to see you soon, our next meeting is 20th January. If you would like any more information, please contact Helen Paton 01603 898986



A New Year full of promise and change. So why not start with a simple quiz? Not reviewing the old year, but just to see what you've taken in. Answers at the end. 1. Where does the quotation "Where shall we three meet again?" come from? 2. Now a little harder, can you place "On the road to Mandalay..."? 3. How about "It was the best of times; it was the worst of times"? 4. What about, "The clock struck 13"? 5. And what happened after "The Assyrian came down like a wolf on the fold"?

The end of January means that several leagues have the end in sight. But at time of going to press we are in the Christmas break and all ends remain fully trousered. Monday morning the celebrated David Ross has points on the unbeaten second place, who has games in hand. Monday evening shows the lead being shared by Mancolm Davis and the SAS. Tues morning sees Brian Marcer in pole position, and in the afternoon he's still there in the B pairs! In the A pairs Alan Jay flaunts his colours. The evening sees Gerrard and Co. with a four point lead. Weds. p.m. sees Roger Bassham (promised him a mention as he was feeling

ignored) enjoying a clear lead. Thurs a.m. has Andy Duddles in an audible lead; the evening sees Steve Artis holding off the Bright Sparks and Barry Stiles holds down Double Trouble. Friday morning has just eight points between first, Maureen Stiles, and last. Afternoon has BPB rock solid. and the evening has Peter Warnes clear of the pack.

So to Club teams. Our Ladies have games in hand and are set to climb. The Men's B are mid table and salivating over the home games to come, and the A team with their games in hand know that second place is achievable.

1. Who said Macbeth. Hands up and..... wrong. The answer I am looking for is John Webber, looking to rearrange a match with his elastic, eclectic selection. 2. And who said Kipling? Well in this instance the answer would be me with my wrong bias.....3. Do I hear Dicken's Tale of two Cities? Not obvious I grant you, but that should be Barry doing the financial report to Committee (solvent so the best), and A.N.Other suggests fresh expenditure (worst). 4. Clearly not Orwell's 1984. Yep, Luke had a glitch on the rink bell system programme again. 5. Following a protest that the colours scarlet and gold were not registered with the EIBA the points were awarded to the home side. So, the cohorts scored Nil.

Wuhan advise that the Chinese New Year is that of the Dog, they must be barking. On which note we wish you all a fabulous 2022.

Bob Daykin

Meet Gracie, a 5-year-old Cavalier King Charles Spaniel who visited us last summer when her owner noticed she had developed swellings on her neck and was a little quiet in herself.

Clinical examination revealed Gracie had swollen lymph glands. Diagnostic tests, including ultrasound scans and sampling of her lymph nodes and abdominal masses confirmed a diagnosis of multicentric lymphoma.

Gracie began a 25-week chemotherapy treatment protocol, known as a 'CHOP protocol'. This is the gold standard treatment for dogs with multicentric lymphoma and involves several medications being given intravenously or orally on a weekly or fortnightly basis.

We are pleased to report Gracie is fit and well and she has now completed her 25-week treatment protocol and is now in full clinical remission. Sadly lymphoma almost always recurs and we will continue to monitor Gracie for any signs of the illness recurring.

Lymphoma is a relatively common condition and recent advances in veterinary cancer treatment have meant that we have been able to successfully treat Gracie and many other canine and feline patients. Since her diagnosis Gracie has been living life to the fullest for the last 7 months which is great news! She is a very special girl and always a perfect patient.

**If anyone wants to include a story,
personal views or simply a thank you,**

**PLEASE CALL LISA
ON 891902**

That's what the magazine is here for!



Useful information

Churches

Horsford All Saints

Church Wardens
Rachel Stowell : 0777 9109 054
Isi Saunders: 897269
Rev Margaret McPhee
01603 893108

revmargaretmcphee@gmail.com

Horsford Methodist Church

Rev Mary Sachikonye
01603 411295
sachies@btinternet.com
Secretary
Kim Pike kimpike03@gmail.com
Humanist Celebrant
Chris Copsey 01603 710262

Clubs

Horsford Bowls

Malcolm Makins 01603 891422 see
advert in Horsford News

Horsford Youth Football Club

www.horsfordfc.co.uk
Chris Brown [07540753894](tel:07540753894)
chris@horsfordfc.co.uk

Royal British Legion - Branch Community Support

Ken Barma 07488392388
kenhbarma@gmail.com

Norfolk County Cricket Club

Manor Park, Horsford
01603 424635

Horsford Social Club

Jackie Carter
01603 787329

Horsford Players

Sandy Kerrridge
01603 891305

Horsford Afternoon WI

Penny Brunt
01603 897665

Coffee Morning at Church Room

Carol Makins
01603 891422

Health

Horsford Medical Centre part of Drayton Medical Centre

Closes 6pm
01603 897766
Prescriptions 01603 898300
Non-emergency call 111
Drayton Surgery 01603 867532

St Faiths /Horsford

Pharmacy Pledger Pharmacy

01603 893993
Opening times Monday - Friday
09:00-13:00 14:15 -18:00
Saturday 09:00 - 13:00 STC check
website
Sunday - Closed

Dentists

NHS Taverham Dental Health Clinic

01603 865666

Horsford Dental Practice

01603 898002

Defibrillator

Front wall porch
East of England Co-op

Hospital

Nearest Norfolk & Norwich University
Hospital 9.2 miles

Meals on wheels

07887800502

Post Office

Within the East of England Co-op
Holt Road

Police - non emergency 101
Crimestoppers 0800 555111

Local authorities

Horsford Parish Council

Anne Panella -07792 865144

Broadland District Council

0844 8008020

Rooms to hire

Horsford Church Room.

Becky Blyth

0603 891433 or 07768629751

Schools

Horsford Primary School

Ashley Best-White Head
01603 898348

St Faith VC First School

Mr John Marshall-Grint - Head
01603 898353

Taverham High School

Mrs C Dallas
01603 860505

Hellesdon High School

Mike Earl/Tom Rolfe
01603 424711

Scouts

1st Horsford & St Faiths Scouts group

Mike Gleeson – Scout Club Leader

01603 891269 gsl@hsfscouts.orgNew

membersltreasurer@hsfscouts.org

Beavers beavers@hsfscouts.org

Cubs cubs@hsfscouts.org

Membership enquiries

membership@hsfscouts.org

Guides

1st Horsford Rainbows

Rachelle Margitson

rachellemargitson75@gmail.com

929935 or 07948085517 or

Ragan Barrett. 07766660500

Brownies

Carole Smith

01603 890657

carole.j.smith24@btinternet.com

Public Transport

First buses no 36 purple line

Horsford Village Hall

Diane Baxter

advert in Horsford News

01603 893900

The Horsford News takes no responsibility for the reliability and accuracy of content made by contributors and/or advertisers. **These contact details will be published at least once a year.** The accuracy of these are not guaranteed and are reliant on contacts and organisations keeping The Editor informed. Closing date for copy will be 8th April 22

. Articles & content and advertisements are welcome. Please contact The Editor for more details.

Send to The Editor by email as pdf or preferred MS Word format to TheHorsfordnews@btinternet.com, Lisa Starling

35 Gordon Godfrey Way, Horsford, NR10 35G. Articles should include the name of the writer and where appropriate their title in the organisation. Any letters to the editor can be published as "Name and address withheld" at the discretion of The Editor.

The Horsford News is a not-for-profit community magazine, voluntarily produced. Thank you for your continued support.



Coach Excursions with IC Travel!

Pick-ups & parking from Taverham with our fabulous Mercedes coaches!

Fully escorted trips – Fast, friendly direct service!

Coach Hire and Private Hire for Airport transfers etc. with 8, 16, 32 and 53 seater executive vehicles

February 2022

Thurs 10 th Feb	Mary Poppins	1.30pm	£70
Fri 11 th Feb	Chippenham Park & Newmarket	9.30am	£35
Sat 12 th Feb	Southwold	10am	£25
Sun 13 th Feb	Carol Nash Motorcycle Show London Excel	8am	£45
Tues 15 th Feb	Saffron Walden Market Day	10am	£25
Wed 16 th Feb	Cromer & Sheringham	10am	£25
Thurs 17 th Feb	Dixeland Jazz and Dinner	8am	£70
Fri 18 th Feb	Ely & Welney Wild Swan Feed & Cream Tea	8am	£35
Fri 18 th Feb	Anglesey Abbey Snowdrops	9am	£36
Sat 19 th Feb	Simply Red O2 Arena Concert Travel	1.30pm	£37
Sat 19 th Feb	North Norfolk Coast	10am	£25
Sun 20 th Feb	St Ives Cambs	10am	£25
Mon 21 st Feb	Hunstanton & Wells	10am	£25
Wed 23 rd Feb	Norfolk Mystery Tour	10am	£25
Wed 23 rd Feb	Pretty Woman Musical	8am	SOLD OUT
Thurs 24 th Feb	Brick Lane Music Hall Panto & 3-Course Dinner	8.30am	£75
Fri 25 th Feb	Letheringsett Mill & Holt	10am	£25
Sat 26 th Feb	Norfolk Broads Day Tour	10am	£25
Sat 26 th Feb	Cirque Du Soleil – Luzia - RAH	8.30am	£95
Sun 27 th Feb	Camping & Motorhome Show NEC	7.30am	£42 (Child £32)
Sun 27 th Feb	Kew Gardens – Costa Rica Orchids	8am	£50
Mon 28 th Feb	Ely	10am	£25
March 2022			
Wed 2 nd March	Best of Broadway – Royal Albert Hall With Royal Philharmonic Orchestra	1.30pm	£75
Thurs 3 rd March	Mamma Mia – London London Coach Only	8.30am	£60 £28
Fri 4 th March	Stitch Festival Islington BDC	8.00am	£42
Sat 5 th March	Ely & Royal School of Needlework Exhibition	8.30am	£30/£22 Coach only

IC Travel— Unit 4, Beech Avenue, Taverham Norwich NR8 6HW

01603 868680

See a full list of trips at www.ictravel.co.uk

Request your latest brochure!



Amber

HOME IMPROVEMENTS

CONSERVATORIES AND WINDOWS INDOOR SHOWROOM

Free
Survey
and Quotation

OPEN 7 DAYS A WEEK!

(OPPOSITE ASDA IN HELLESDON)

Autumn Price Freeze

ORDER NOW TO BEAT THE PRICE INCREASE



Our state of the art indoor Norwich Showroom is almost 5000 ft² and is packed with exciting conservatories, orangeries, windows, doors and more! We've installed, decorated and furnished our living spaces so there are room settings where you can sit and imagine the lifestyle space and luxury we will add to your home.



DOWNLOAD
YOUR FREE
BROCHURES
TODAY

CONSERVATORIES / ORANGERIES / EXTENSIONS / SOLID ROOFS / WINDOWS
DOORS / PORCHES / GARDEN ROOMS

VISIT OUR SHOWROOM SOON

TEL: 01603 672638 | WWW.AMBERHOME.CO.UK

52 HELLESDON PARK INDUSTRIAL ESTATE, NORWICH, NORFOLK NR6 5DR

FREE SURVEY & QUOTATION - Open 7 days a week

(opposite ASDA in Helleston)

Amber

HOME IMPROVEMENTS





Coach Excursions with IC Travel!

Pick-ups & parking from Taverham with our fabulous Mercedes coaches!

Fully escorted trips – Fast, friendly direct service!

Coach Hire and Private Hire for Airport transfers etc. with 8, 16, 32 and 53 seater executive vehicles

February 2022

Thurs 10 th Feb	Mary Poppins	1.30pm	£70
Fri 11 th Feb	Chippenham Park & Newmarket	9.30am	£35
Sat 12 th Feb	Southwold	10am	£25
Sun 13 th Feb	Carol Nash Motorcycle Show	8am	£45
	London Excel		
Tues 15 th Feb	Saffron Walden Market Day	10am	£25
Wed 16 th Feb	Cromer & Sheringham	10am	£25
Thurs 17 th Feb	Dixeland Jazz and Dinner	8am	£70
Fri 18 th Feb	Ely & Welney Wild Swan Feed & Cream Tea	8am	£35
Fri 18 th Feb	Anglesey Abbey Snowdrops	9am	£36
Sat 19 th Feb	Simply Red O2 Arena Concert Travel	1.30pm	£37
Sat 19 th Feb	North Norfolk Coast	10am	£25
Sun 20 th Feb	St Ives Cambs	10am	£25
Mon 21 st Feb	Hunstanton & Wells	10am	£25
Wed 23 rd Feb	Norfolk Mystery Tour	10am	£25
Wed 23 rd Feb	Pretty Woman Musical	8am	SOLD OUT
Thurs 24 th Feb	Brick Lane Music Hall Panto & 3-Course Dinner	8.30am	£75
Fri 25 th Feb	Letheringsett Mill & Holt	10am	£25
Sat 26 th Feb	Norfolk Broads Day Tour	10am	£25
Sat 26 th Feb	Cirque Du Soleil – Luzia - RAH	8.30am	£95
Sun 27 th Feb	Camping & Motorhome Show NEC	7.30am	£42 (Child £32)
Sun 27 th Feb	Kew Gardens – Costa Rica Orchids	8am	£50
Mon 28 th Feb	Ely	10am	£25

March 2022

Wed 2 nd March	Best of Broadway – Royal Albert Hall With Royal Philharmonic Orchestra	1.30pm	£75
Thurs 3 rd March	Mamma Mia – London	8.30am	£60
	London Coach Only		£28
Fri 4 th March	Stitch Festival Islington BDC	8.00am	£42
Sat 5 th March	Ely & Royal School of Needlework Exhibition	8.30am	£30/£22 Coach only

IC Travel— Unit 4, Beech Avenue, Taverham Norwich NR8 6HW

01603 868680

See a full list of trips at www.ictravel.co.uk

Request your latest brochure!



Amber

HOME IMPROVEMENTS

CONSERVATORIES AND WINDOWS INDOOR SHOWROOM

Free
Survey
and Quotation

OPEN 7 DAYS A WEEK!

(OPPOSITE ASDA IN HELLESDON)

Autumn Price Freeze

ORDER NOW TO BEAT THE PRICE INCREASE



Our state of the art indoor Norwich Showroom is almost 5000 ft² and is packed with exciting conservatories, orangeries, windows, doors and more! We've installed, decorated and furnished our living spaces so there are room settings where you can sit and imagine the lifestyle space and luxury we will add to your home.



DOWNLOAD
YOUR FREE
BROCHURES
TODAY

CONSERVATORIES / ORANGERIES / EXTENSIONS / SOLID ROOFS / WINDOWS
DOORS / PORCHES / GARDEN ROOMS

VISIT OUR SHOWROOM SOON

TEL: 01603 672638 | WWW.AMBERHOME.CO.UK

52 HELLESDON PARK INDUSTRIAL ESTATE, NORWICH, NORFOLK NR6 5DR

FREE SURVEY & QUOTATION - Open 7 days a week

(opposite ASDA in Helleston)

Amber

HOME IMPROVEMENTS

