

THE Horsford News

May 2019 Issue 161



HORSFORD'S ANNUAL MUSIC FESTIVAL

VILLAGE VIBES

SATURDAY 13TH JULY 2019

HORSFORD COMMUNITY FIELD, HOLT ROAD

13:30 – 23:00 (GATES OPEN FROM 13:00PM)

LIVE BANDS ON STAGE / SIDE STALLS & GAMES

BOUNCY CASTLE, BBQ, DONUTS & MORE...

PICNICS WELCOME / LICENCED BAR

**** NO ALCOHOL IS PERMITTED ONTO THE FIELD,
UNLESS PURCHASED AT THE BAR****

ALL AGES WELCOME

UNDER 12'S – FREE ... AGE 12 – 16 £4

ADULTS (& OVER 16) - £8 ADVANCE / £10 ON THE GATE



TICKETS AVAILABLE FROM

HORSFORD SOCIAL CLUB (01603 893317)

DEREK – 07796 008452 / LISA 07447 462681

****LIMITED TICKETS AVAILABLE****



**LIKE & WATCH THE HORSFORD SOCIAL CLUB
FACEBOOK PAGE FOR MORE INFORMATION**



**News, Views and Information
for the Parish of Horsford**



South Eastern
School of
Martial Arts

Building Confidence in Children Since 1989

Free Intro Class

Karate Kickboxing or Kung Fu

Classes available for ages 4yrs & above

Master Instructor

Karate World Champion

Great Britain Coach

Specially Equipped Studio

**Anti-Bullying and
Confidence Building**

Open 6 days a week



01603 528689

www.sesma.co.uk



CHILDREN'S
PROTECTOR





THE Horsford News

thehorsfordnews@btinternet.com



Your news and views, your stories and letters,
local information and local businesses for the Parish of Horsford

ADVERTISING STYLES AND PRICING

Style	Dimensions	Price – per year (4 issues)
Eighth Page (Landscape)	90mm wide x 65mm deep	£80
Quarter Page (Portrait)	90mm wide x 135mm deep	£120
Quarter Banner (Landscape)	190mm wide x 65mm deep	£120
Half Page (Landscape)	190mm wide x 135mm deep	£180
Full Page (Portrait)	190mm wide x 277mm deep	£320

Artwork

Adverts can be received in various software formats and the Editor will make every effort to accommodate these. Adverts not received in the dimensions above or where a change to an advert has been requested – this may incur an artwork charge of £15 at the discretion of the editor.

If creation of a brand new advert is needed – these can be created from £15.

Anyone wishing to advertise please telephone the Editor on 891902

EDITORIAL

I love a good pub quiz. But can you guess the year?

- The winter of discontent
- Trevor Francis becomes a £1million footballer
- Liverpool win division one and Arsenal win the FA cup and Nottingham Forest are European champions
- First elections of the European parliament are held
- Margaret Thatcher became first female UK Prime Minister
- 'My Sharona' by The Knack was number 1 in the charts for 6 weeks

Did you guess right or could you remember?

1979! Yes 40 years ago who would have thought that football, music and politics were still the main subjects. Some subjects never change. However, before you ask – 'what's the relevance?' Well would you believe the Horsford New is 40 years old this year! I've managed to get hold of some of the original issues from 1979 and 1980 courtesy of the original Editor – Jim Graves to get a bit of insight into how the magazine came about, main content and even who was advertising at the time.

In the early days the printing was done at Jim's employers Laurence Scott and Electromotors who had their own printing department. The magazine was compiled by Jim and his wife Shirley who sat down and stapled all the pages together before

setting off around the village to distribute to each household (about 750). Back in the day, very few contributors had typewriters let alone word processors and much came in longhand so Jim had to type the lot up on to Gestetner lithograph stencils on a portable typewriter! Fortunately help would soon be at hand and following the first few issues John Starling with support from wife Ros took up the reins leading onto where the magazine is today.

Advertisers included local Coal Merchants G. C. Bell, TV Rentals and Repairs, The Marsham Arms and also SPAR Food Market (now the CO-OP). The need for Fossil fuels and TV repairs has clearly declined however it's good to see that some local businesses have stood the tests of time.

In the very first issue, articles included reference to 'The New Taverham High School'- amazing to think that Taverham High is now 40 years old. Other articles include 'Horsford Boys F.C', 'Horsford Players' and even 'Footpath Fouling'. 'Election Fever' is also noted referencing Callaghan's government and upcoming Parish Council elections!

I will post the pages as best I can on The Horsford News facebook page for those that are interested in a touch of nostalgia.

Now talking about the present day, at the time of going to Print, the Canaries are flying high, Village

Vibes is again on the music horizon and Elections are just around the corner. Like I said – some subjects never change!

One point that I have continued to make over the years that I have been editor is that this magazine is here for you. Your news. Your interests, Your businesses. I will sign off this issue with an extract from the very first editorial that is still true to this day.

Extract from April 1979 editorial

This has been the first edition of the 'Horsford News'. The idea was conceived at the meetings of the parish council who agreed to underwrite the cost of the first two editions in April and July to see if the idea was feasible. At the time of going to press the response from contributors and advertisers has been magnificent. It is hoped that parishioners will support the businesses who have placed advertisements in this paper.

The whole idea of this paper is to foster a good community spirit in Horsford, to improve

communications and to make newcomers feel welcome. Contributions for the next edition are invited from all organisations and from individuals....

Enough said – enjoy the read!

Lisa Starling
Editor

MEMBERS OF THE PARISH COUNCIL

Councillor	Address	e-mail
Brian Blythe	2 Lawn Close	brianblythe@talktalk.net
Chris Brown	54 Angela Road	angliancarpets@angliancarpetsltd.co.uk
Kathryn Clarke	15 Laburnum Close	norwichdollshouses@gmail.com
Gary Branch	Apple Barn Dog Lane	gary.branch@live.co.uk
Joanne Keeler	Sharps Hall Farm	joannekeeler@talktalk.net
Malcolm Makins	8 Warren Close	m.makins@sky.com
Neil Medler	5 Mill Lane	neilmedler1976@gmail.com
Mark Smith	1 Mill Lane	smith.m.j@talktalk.net
Melanie Smith	1 Mill Lane	smith.m.j@talktalk.net
Virginia Sokalsky	32 Mill Lane	virginia.sokalsky@gmail.com
Alan Wright	2 Angela Road	patalan@greenbee.net
Adrian Scott	40 Mill Lane	adrianpscott@btconnect.com
Clerk to the Council	3 Lawn Close	horsfordpc@gmail.com
Jim Graves	Tel: 01603 898621	

HORSFORD PARISH COUNCIL

<http://horsfordpc.norfolkparishes.gov.uk>

Clerk to the Council - J.R.Graves C.Eng. DMS M.I.E.T. A.C.M.I.

Tel. / Fax 01603 898621

Mobile 07889 733392

e-mail parishcouncil@jimgravesltd.co.uk

3 Lawn Close

Horsford

Norwich NR10 3DJ

NEWS FROM THE COUNCIL

The Business Action Plan working group which carries out feasibility studies on projects before making recommendations to the Parish Council has completed the study on toilets on the recreation ground and this will be discussed in May. The order has been placed for planting and maintenance of the Brewery Lane roundabout subject to the necessary license from Norfolk County Council. A preliminary plan for a youth engagement project is being prepared with the aid of a consultant.

Norwich Fringe Project have been commissioned to carry out maintenance and improvement at all the Parish Pits to make them more of an amenity for residents.

The conversion of all the Parish footway lighting to LED lanterns has commenced and will be completed in the next few weeks. This will have a marked effect on energy and maintenance costs.

The Parish Council have developed a new website which it is hoped will be more informative and user-friendly. It can be found at <http://www.horsfordpc.info>

At the Annual Parish Meeting the Chairman gave his annual report and the Clerk gave a draft of the annual accounts which were being prepared for audit. Both are appended below

At the end of the April meeting several councillors said that they would not be seeking re-election including Alan Wright (44 yrs.) Brian Blythe (36 yrs.) and Malcolm Makins (16 yrs.) The Council has completed its four year term and nominations have closed. Your new Parish Council will meet on May 7th. and will be made up of Chris Brown, Adrian Scott, Kathryn Clarke, Joanne Keeler, Derek Jacks, Katrina Johnson, Sandra Lumbard, Gary Branch and Deb Scott.

Broadland District Council have adopted a Public Spaces Protection Order which requires dog owners to clear up after their pets in all land open to the public. The maximum fine is £1,000 and a fixed penalty notice is £100.

Roads and traffic have been a major concern to the council this year, the full opening of the NDR

has proved a mixed blessing to Horsford. Since its opening, traffic has increased by 30% through the village, which has resulted in long tailbacks on the Holt Rd at peak times. We are awaiting the results of surveys of the NDR effect. This not been helped by other roadworks including the construction of the Green Lane roundabout.

The council were very opposed to the offset design of this roundabout and with the help of our county councillor and Broadland planners a central design was drawn up, Arrangements were made for the necessary land to be made available, but David Wilson Homes would not proceed with this and the original plan was built. This has caused safety concerns and highways have drawn up a plan for some changes but they have not happened yet.

At the other end of the village the council have decided to adopt the roundabout and quotations have been sought for a design which will enhance the approach to the village. Work on this will happen over the summer.

A referendum held in July 2018 approved the Neighbourhood Plan and this will be used in deciding the council views on planning applications. Recommendations from the plan will be the basis for future projects

The business action plan working group has been working on these projects for the council approval. The first was to provide all primary school children with high viz jackets to wear on the walk to school which should help safety and hopefully encourage walking to school. With the increased use of the play facility on the recreation ground the VPMC requested help with new CCTV which the council approved and it is now in use. Other projects in the pipeline include toilets on the rec, and assistance in forming a youth group similar to one operating in Sprowston. These projects can be financed from the CIL money received from developers.

The council were keen to raise the profile of the council and a series of surgeries were held for one to one involvement of parishioners but there has been little support. Following on from this a new web site had been launched which will be

more user friendly.

The street lighting which is maintained by the Parish Council is ageing and we will be looking to update to LED. A quote for this work have been approved. Mill lane has been fitted with LED lights which dim from Midnight until 5am to conserve power as part of trial before full conversion.

Other grants given by the council have to support foot way lighting at the churchyard, extra grit bins and dog bins have been installed.

I would like to thank councillor Katherine Clark for attending the airport liaison meetings to the non council members of the BAP committee and to Councillor Malcolm Makins for organizing Horsford Tidy day and in particular the scouts and other parishioners who turned out help.

Finally thanks to my fellow councillors and Jim Graves our clerk for all their support.

This is the last meeting of this council. A new council will be formed after the election on May 2nd.

I would like to thank those councillors who have decided not stand, for the time they have given to benefit the Parish.

This is my last Chairman's Report. After 36 years on the Council I have decided to retire

Jim Graves – Clerk to the Councilparish

A WORD FROM THE CLERK

There has been some discussion in the parish about the level of the parish precept which was shown on your recent council tax statements. It has gone up by 22.1%. This may sound alarming but it has to be taken in context – the average householder in Horsford is paying about 70-80p/week and this is now more in line with similar local parishes such as Drayton and Taverham. This brings me to the next point – why is it necessary? With the increasing population of Horsford, your Parish Council seeks to improve facilities. After a new project is completed there are ongoing revenue costs which have to be met from the parish precept. The other source of funding which you may have heard of is the Community Infrastructure Levy (CIL) which is a levy on all new buildings and part of which is allocated to the Parish Council for infrastructure improvements. Whilst this can usually be used for capital costs such as new play equipment, CCTV, street light upgrade, public toilets etc. it cannot be used for the ongoing running costs which come from the precept.

Jim Graves

BUSINESS ACTION PLAN GROUP

The following is an update on some of the projects underway.

Green Infrastructure Project

Annie Sommazzi from Broadland District Council attended a recent Group meeting and gave a presentation on the Green Infrastructure Project as it relates to Horsford. She talked about Broadland District Council working in partnership with the Parish Council to deliver schemes such as the village circular path project which was referred to in the Neighbourhood Plan.

Roundabout Planting

A lot of work has been done on this project and Jim Graves, the Parish Council Clerk, invited four companies to tender for the contract. At the April Parish Council meeting, the tenders were opened and the contract has been awarded to Ashfords Grounds Maintenance.

Public Toilet Project

This is the project to provide public toilets on the recreation ground. Some of this work cannot be done until the summer and It is thought a crane will

HORSFORD PARISH COUNCIL INCOME & EXPENDITURE ACCOUNT YEAR END MARCH 31st. 2019			
31/03/18			
	INCOME		
39274	Precept	51038	
65	Interest on Investments	190	
1419	Allotment Rents	1470	
0	Insurance Claims	0	
0	Miscellaneous	0	
9649	Community Infrastructure Levy	71365	
0	New Homes Bonus	0	
7490	Neighbourhood Plan Grants	0	
0	VAT reclaimed from prev. year	0	
57897	TOTAL INCOME	124063	
	EXPENDITURE		
12958	General Administration	13853	
14850	S.137 payments	3100	
3535	Allotments	1920	
119516	Village Hall & Rec.Ground	26015	
5403	Street Lighting	12222	
11498	Neighbourhood Plan	1549	
2859	Capital Expenditure & miscellaneous	4334	
170619	TOTAL EXPENDITURE	62993	
	GENERAL FUND		
198774	Balance at April 1st.	86052	
57897	Add Total Income	124063	
-170619	Less Total Expenditure	-62993	
86052	BALANCE AT 31st.MARCH	147122	
Closing Balances representing the General Fund			
10130	Barclays Current a/c	29583	
80714	Barclays Base Rate Tracker A/c	120904	
0	Plus Debtors at 31st.March	0	
-4792	Less Creditors at 31st.March	-3365	
86052		147122	

be needed to get the actual toilet block in place via the car park. The project has now been approved by the Village Hall Committee and a quotation accepted. The project cost will be in the region of £44,000 with annual cleaning/maintenance cost of around £6,000. This will be discussed at the May Parish Council Meeting

Youth Group Project

The Parish Council has given approval for a very exciting project to develop an Action Plan for them to consider regarding a Youth Group in the village. As with the Neighbourhood Plan we have a consultant working with us on this who has already implemented such a group locally, and we will be looking for participation from the young people in Horsford to work with us as the Action Plan progresses. The Project Team have been identified and their second meeting takes place on 12 April. The Project Team has met with some representatives from the young people in Horsford and from the Sprowston Youth Engagement Project and this was very productive.

Community Action Norfolk – Good Neighbourhood Scheme

Rik Martin from CAN was at the most recent Group meeting and he talked about the Good Neighbourhood Scheme. There are 18 such schemes in Norfolk and they mainly operate with 15-20 volunteers and the minimum number of volunteers to start a scheme is three. The Scheme might offer services such as Community Transport, low level DIY, gardening, changing light bulbs, etc. and befriending – carried out on a rota basis. The Group will consider the costs and viability of the Scheme and make recommendations to the Parish Council.

Welcome Pack

With changes in Data Protection legislation, the Group had to think again about ways of providing a personalised Welcome Pack for new people in the village. There are several options but we have been working with Lisa Starling about the possibility of using the Useful Information section at the back of Horsford News for this purpose. It is hoped this will be ready for the next edition of Horsford News.

These articles have been written by the Communications Group, part of the Business Action Plan Group



NEBULA FEDERATION

Back in February our children lifted the roof of the O2 in London when they took part in the Young Voices choir. The children performed alongside 5000 – 8000 other children as a single choir to capacity audiences of family and friends. Being a part of Young Voices provided our children the opportunity to perform in one of the world's greatest arenas alongside incredible artists; this year the artists including Beau Dermott, Sharlene Hector and Tony Hadley. They achieved this with all their school friends around them for support, this helps with their self-belief, self-motivation, confidence, and the ability to communicate as part of a team - which is invaluable! The aim of Young Voices is to inspire a love of music and create memories for the children that will last a lifetime. We are looking forward to taking part again next year!

All of the Nebula schools have taken part in a Black History Reading week this term. During the last week of February, the children learnt about The Windrush Generation, focussing on what the HMT Empire Windrush ship was and the positive contribution that the Windrush Generation brought to the UK. We also looked at the book 'Mixed' and 'Happy in our Skin', giving our children the platform to talk about, and celebrate diversity.

As part of reading week, we had a visit from Michael De Souza, author of CBeebies Rastamouse. Michael retold one of his stories to the children, inviting the staff to take part in bringing his story to life. We also enjoyed a visit from local author and illustrator Matt Reeve. Matt met all of the children in Reception, Year One and Two and shared his book 'Norwich: A City of Dragons' with the children.

Later in the term the children also had the opportunity to meet author Luke Temple. The children were entertained by his energetic presentation of his trilogy of Felix Dashwood books and the Albert Adventures. He used film clips linked to his stories which fully engaged and hooked everyone in. He gave children a snippet of what life is like as an author and emphasised and delivered the message that if you are not so confident in all areas of writing, such as spelling, these will not hold you back, you can still become a published author.



OPEN *Garden*

Saturday 9th June 2019
2pm to 5pm

Horsford Hall, Church Street, NR10 3DB
Entrance £5 - Under 10's free
Refreshments and Raffle

Money raised will go towards Church repairs

The Church is open should you need to use the facilities

www.horsfordbenefice.org.uk



Get organised at the start of the tax year

Many people leave their tax-planning and tax returns until the last minute but, as we're now at the start of a new tax year, why not get organised and deal with things in a more orderly fashion. Here are several things you could consider.

ISAs: Most savings and investments are subject to tax but, within an ISA, all of your income and capital gains are tax-free. The overall allowance is £20,000 (£40,000 for a couple) and there are several types of ISA to choose from, depending upon your age and intentions with the money. These include Cash, Stocks and Shares, Junior ISA, Help to Buy, Lifetime and an Innovative Finance ISA.

Pensions are a very tax-efficient way of saving for retirement, especially for those paying higher rate tax as contributions will receive 40% tax relief - effectively paying only £60 for a £100 contribution. There is a cap on tax-relievable contributions of £40,000 but, depending upon your earnings, this may be higher if unused allowance can be carried forward from the three previous tax years, or only £4,000 if you have already flexibly taken any pension benefits.

The **child benefit tax charge**, which reduces the amount of child benefit if an individual earns more than £50,000 (includes all income,

MONEY MATTERS



PETER BARTON

such as rental income), could mean paying back some or all of the child benefit you've already received. By paying into a pension and reducing your income to £50,000 it's possible to avoid the child benefit tax charge altogether. Remember that pensions are long term, not accessible until at least 55 and pension legislation can and does change.

If you're selling any assets, such as shares, individuals have a **capital gains tax allowance** of £12,000 in the 2019/20 tax year. If your gain exceeds this, consider splitting it over two tax years or gifting some to a spouse or civil partner before selling as usually gifts between the two are CGT exempt.

Finally, the **marriage allowance** lets you transfer £1,250 of your Personal Allowance to your spouse or civil partner, provided your income is less than £12,500. They must earn more than you, but less than £50,000, and it will reduce their tax by up to £250. You can also backdate your claim by up to four years if you were eligible for the marriage allowance in previous tax

years, which means you could receive up to £1,150 in total.

These are just some of the areas which you may want to address and, if Continuum can be of any help, please get in touch.

The information contained in this article is based on the opinion of Continuum and does not constitute financial advice or a recommendation to a suitable investment strategy. You should seek independent financial advice before embarking on any course of action.

The value of investments can fall as well as rise and you may get back less than you invested.

The levels, bases and reliefs from taxation are subject to individual circumstances and may be subject to change.

The Financial conduct Authority does not regulate taxation planning

Peter Barton is an Independent Financial Adviser at Continuum.
Tel: 01603 879875 or 07787 561087. Email: peter@mycontinuum.co.uk
www.mycontinuum.co.uk

CONTINUUM
YOUR FINANCIAL FUTURE MADE REAL

Continuum is a trading name of Continuum (Financial Services) LLP Falcon House, Eagle Road, Langage, Plymouth, PL7 5JY which is authorised and regulated by the Financial Conduct Authority. Continuum (Financial Services) LLP is a Limited Liability Partnership. Company registration number OC393363. Registered in England & Wales.

HORSFORD CHURCH OF ENGLAND VA PRIMARY SCHOOL

Our children have been busy learning outside of school over the last term, with Year One and Two going on an adventure to Holt Country Park. Supporting their learning about geographical features and habitats, the children spent the day exploring the park, identifying different features and creating micro-habitats for a creature that might live there.

Year Two have also visited the church this half term to learn all about Easter with Reverend Margaret. They had an exciting morning learning about the importance of Easter to Christians. Reverend Margaret rounded off the term with an Easter

Service for the whole school, where she gifted palm crosses to all of the children to celebrate Easter.

Year One have also been tying up their laces and competing in the multi-skills event with other local schools at Hellesdon High School. The children practised aim, balance, teamwork, scoring, and moving in different ways in a range of sports activities across the morning. As always, it was a well organised event and the children enjoyed taking part.

Some of our Year Five children took part in the Level 2 Cycling Proficiency course which is organised by the Norfolk County Council Road Safety Team. Unfortunately the weather was against them from the start, with rain and strong winds forecast all week, but luckily they managed to dodge the

showers and all of the riders completed the course with flying colours.

PTA

Our new PTA team are up and running and have successfully organised and run their first fayre. The Easter Fayre was a great fundraiser, raising just over £1000 for the school, which is a fantastic effort. The money the PTA raises goes towards things like: a merit prize for every child, an end of year trip for the children in the house which gets the most house points, books and reading areas around school as well as helping to run and maintain our two minibuses. The money the PTA raises makes a real difference to the children so keep an eye out on the school website for PTA events and come and support us when you can.

RECTOR'S RAMBLINGS

Decluttering & Changes at Horsford Church

I've been doing a bit of decluttering recently although I have to admit it is work in progress! Paper, clearing stuff out to charity shops or passing onto others things they will enjoy using or reading and which I no longer need. I've found it therapeutic. It's a chance to think and ponder my priorities, a chance to ask myself why I am here and what should I be doing!

The Church has also been doing some decluttering; sorting out the old boiler shed at the back of church, going through book cases and corners we just don't quite get round to dealing with. It has also highlighted the work that needs to be done in this wonderful medieval building. So we're planning on some changes!

What, we don't know exactly yet but with the thatch needing replacing, guttering failing and an increase in the use of our church building each week, we know we need to ensure it is maintained and enhanced for the 21st Century. The PCC is at the point of appointing a project architect to help us through. One of our congregation members is to be Project Manager. So there'll be news updates as we progress the planning, thinking, reflecting and of course the raising of funds.

What should the church look like inside? What facilities will help ensure coming to services or popping in during the week make it more comfortable and accessible? Do email (revmargaretmcphee@gmail.com) or write to me or give me a call (893108) and let me know.

These plans cost money of course! Once plans are established, grants can be applied for. We're encouraged by what happened at Hevingham Church, one of my other Parishes, which can only be described as a miracle. As well as donations and grants received, the PCC knew they would need to take out interest free loans for approximately £19,000. The week the invoice was received I had a phone call letting me know about a Legacy – someone had left a donation to the church for repairs of £37,500! I cheered on the news as there was no need to take out the 2 interest free loans and there is some money for other repairs in the church. I've often heard this sort of story happening; wonderfully it's happened to Hevingham PCC. If you would like to leave a donation in your Will for Horsford Church, as you might do for other charities, you can find more information at www.churchlegacy.org.uk or call the Church Legacy and Wills information line on 08445 870875. Like the one Hevingham PCC have received, it could be perfect timing.

Fund Raising Events

Thank you to everyone who came along to the pancake party in February and our Friday night quiz at the beginning of April. They were both good fun and raised money for the church funds, including for the new resources we're planning for the children's area in church.

Horsford Hall Open Gardens is our next big event which we have by kind invitation of the owners. This takes place on **Sunday 9th June**, 2pm to 5pm, £5 entry including a drink and a cake. The money raised from this event (and others to be planned) will go directly into the project I've written about. It was a fantastic event last year and we hope many more of you will be able to come along this time.

A Service for Everyone

We had an enjoyable Mothering Sunday service at the end of March when we celebrated the churches which meant the most to us (our mother church) and saying thank you for those who care and help us grow and become the people we are today, which included our Mum's of course. It was a more relaxed style of service and we had many guests come along.

So from **Sunday June 9th**, and **every 2nd Sunday of the month**, we'll have this more relaxed kind of service followed by refreshments. We're calling it an "all age service" and is aimed at everyone, whatever our age. It will be around 40 minutes long so come along and give it a try. Parking is at

the Spice of India or, if you find mobility difficult, there are 5 places at the rear of the church.

From the Registers

Baptisms

We welcomed into God's family Sophia, Tanner and Poppy.

Funerals

Our prayers for the family and friends of those whose funerals have taken place:

Gwen Basey	29 January
Hilda Broom	7 February
Jean Robinson	28 February
Anny Hare	1 March
John McGowan	26 March
Andrew Smith	9 April
Carol Nockels	17 April

HORSFORD METHODIST CHURCH

Our coffee morning for Musical Keys was quite well attended and we were able to raise £141.00 for this worthwhile cause. We would love to see more people supporting our fund raisers as they are always for a good cause and they are well advertised in the village. Please look in the window boxes and on the Horsford website.

On 29th March we said goodbye to our dear friend Linda Payne. The chapel was overflowing for a wonderful service led by Rev. Mary. It was great to see so many people come to remember this special lady. She and Alan had done so much for our church in her role as property steward and they were always ready to be there if there was a problem. She will be much missed by us all especially her hugs which she gave to everyone who came through the door. Our thoughts and prayers are with her husband Alan and family.

We are now looking forward to Easter and the most important event in the Christian calendar. Drayton church will be joining us for our Maundy Thursday supper which will be led by Rev. Pauline Greasley. On Good Friday we will join our parish church friends for a short service before a walk of witness through the village to the chapel for the remainder of the service. Our Easter Sunday service will be led by local preacher Sue Moore when we will celebrate the resurrection of our Lord and Saviour Jesus Christ. Everyone is welcome to any of these services.

We are hoping to have another fund raiser before our Strawberry Tea which is on 22nd June so do look out for the posters and on the Horsford website.

Pauline Kerry.

HORSFORD AFTERNOON WI

What a start to the Norfolk WI Centenary year we have had. Six of us went along to the Holiday Inn to enjoy 'A Night to Remember' and that's exactly what we did. Three hundred plus ladies from around Norfolk wine, dined and then danced the evening away.

As you may have seen in the news or local paper during March over a thousand WI members attended the Norfolk Federation's Annual Meeting at the Theatre Royal. Horsford ladies were well represented. What a fantastic day it turned out to be. We were honoured to have the national chairman Lynne Stubbings attending and after a warm welcome from the Mayor our morning speaker was Peter Wilson, formerly of the Theatre Royal, who entertained us with his stories. Laughter was definitely the order of the day as our afternoon speaker was Pam Ayres who had everybody in stitches with her comic genius. Of course, throughout there was business to be dealt with along with prizes and certificates to be presented, but what a joyous day it was.

At the time of writing we still have April's events to look forward to, but more of that next issue.

We are still busy locally, having managed to fit in defibrillator training with first aid and a beading day with those taking part wearing their new jewellery at the March meeting.

All of these events and opportunities are widely available to any WI member so look out for our posters around the village, our Facebook page or if you would like to know more or be part of our WI, why not drop in at 2.15pm on the first Wednesday of the month at the village hall. We will be delighted to see you. For any further information please contact either Terrie Tooes 01603 893753 or Penny Brunt 01603 897665.

OPEN HOUSE

The Methodist Church is open every Thursday morning from 8.45 - at least 10.30. We provide a space to meet up with your friends or just to sit

quietly with a newspaper; to provide a listening ear or just some company. There is always a cuppa or cold drink available and biscuits, scones or similar to tempt you. There is no charge for this as it is a service we would like to provide for our village. We are situated at the heart of the community, next to the Village Hall, with plenty of parking. Why not pop in after taking the children to school, or as you walk down to the shops. Everyone is welcome.

HORSFORD TIDY DAY 2019

Firstly I must apologise for not being able to organise a Spring Clean this year due to various commitments. However, I would like to thank the various members of the community that have borrowed the equipment and cleaned up some of the more notorious litter areas in and around the village.

With the coming of spring and the grass getting longer, could we all make sure that any polystyrene food containers seen lying around are put in a bin, as when the verges are mown they are chopped into hundreds of pieces which are much more difficult to deal with.

As you read this article, I shall no longer be a Parish Councillor, but have been assured that as long as the Parish Council are advised that we are holding a Tidying Event then we can be covered by their insurance.

Tidy Day this year will be on either 7th or 14th of September depending on which is most suitable for the Scouts, Guides, Cubs etc. whose presence is always greatly appreciated. I will confirm which date in the next issue of Horsford News and with some posters.

Meanwhile let's try and keep our village free from litter over the summer and hopefully find only small amounts (IF ANY !!) in September.

**MALCOLM MAKINS
(01603 891422)**

HORSFORD KNIT WITS

The Knit Wits are members of the Norfolk Knitters and Stitchers which gives us access to competitively priced wool, loads of help and loan of patterns and in return they collect all our finished items and distribute them to the various charities. This of course requires storage space at the various "Wool lofts" around Norfolk and money to continue in

the future. So, we are looking forward to some fundraising events which we hope the public will come along and enjoy.

The first event is to be held at Sheringham Community Centre on Saturday 20th July 2-4.30 pm, there will be something for everyone, games, raffles, goods for sale, demonstrations plus tea and cakes.

The second big event will be in the Autumn on 5th October, our Grand Exhibition to be held at Central Hall, Wymondham 10am to 4pm. This will be a celebration of what is best of the Norfolk Knitters and Stitchers.

So, if you would like a fun day out and to find out more about us please come along, all details can be found at NorfolkKnitters.org.uk or by contacting me on 01603 898986.

Helen Paton

HORSFORD SOCIAL CLUB

Thank you to all members who have already renewed their memberships. All members should have had renewal forms through their door by the time you read this article. If you have not had your renewal please call in at the club and pick up a form or email horsfordsocialclub@hotmail.co.uk All new membership cards can be collected from the club about a week to 10 days after they have been posted in the membership box. We have a good Easter to look forward to with some great bands playing (see below) We have the 2 bank holidays in May coming up (see entertainment list below) along with Village Vibes on Sat 13th July. There is a full afternoon/evening programme for this event with 5 bands playing from 1 – 11pm. There will be Rides and various side stalls and games along with bar, bbq, and Ice Cream van. Tickets are on sale now under 12's free, Age 12-16 £4 and Adults £8 in advance or £10 on the gate. Tickets available from Social Club or contact Lisa 07447462681 or Derek 07796008452


We are looking to book the annual London Show trip over the next few weeks so if you have any shows you would like to see old or new get in touch and we will see what we can do. The Annual Beer Festival will take place over the May bank holiday weekend from Friday 24th May until Monday 27th May. We have changed the time of year for the Beer Festival this year so not to clash with other events in the area. Funky Stuff (great all round sound not to be missed) and The Waps back by popular demand to entertain on this weekend.

PC PROBLEMS?

One to one support services, for businesses & home users.

AVAILABLE NOW!

*Upgrades & repairs undertaken
on desktops, laptops,
game consoles, iPads & iPods!*



**ONLY AUTHORIZED
& REGISTERED
COMPANY IN THE
TAVERHAM AREA!**

FANTASTIC SPECIAL OFFERS:

- *Collection & return on repairs within the Norwich area!*
- *Refurbished laptops from £75!*
- *Advice given on repairs & upgrades!*
- *Laptop motherboard repairs from £35!*

Wanted for cash: your old laptops, iPods & game consoles!

£ £ £

FREE health check on **ALL** computers, laptops, iPads, iPods & games consoles at our shop. All while you wait!

10% OFF

**REFURBISHED
LAPTOPS
& REPAIRS
WITH PRESENTATION
OF THIS VOUCHER.**

EXPIRES END JANUARY 2019

APC

Affordable Price Computers

*View all of our computers
on our website at:*

WWW.AFFORDABLE-PC.COM

TEL; 01603 867521 MOBILE; 07762 039656

*4 Cypress Close, Taverham
Norwich, NR8 6QG*

BB Installations

- Windows, Doors, Fascia's, Soffits, Guttering
- Brickwork, Walls, Patios, Driveways
- Roofing, Ridge Repairs, Garages
- Conservatories, Garden Rooms
- Kitchens, Bathrooms, Wet Rooms
- Plastering, Tiling, Painting & Decorating
- Restoration & Renovation Projects
- New Builds, Extensions, Conversions
- Roof Windows, Dorma, Solar Energy

Construction, Restoration & Installation specialists

*Your local builder & installer, please check
the website for our client testimonials.*



www.bbinstallations.co.uk

No job too large or small. Contact us for a free no obligation quotation from our fully qualified team of professionals

Email: sales@bbinstallations.co.uk

Telephone: 01603 898230 Mobile: 07780 964298

The Firs, 15 Buxton Road, Frettenham, Norwich NR12 7NG

NORFOLK PLUMBING

Domestic Installation & Repairs
Emergency calls welcome



Bathroom & Kitchens

- Basins
- Toilets
- Baths
- Showers
- Tiling

Heating

- Radiators
- Powerflush
- Pumps
- Cylinders

Repairs

- Blocked drains / Jetting
- Leaks
- And more...



Alan Cooper

Telephone: 01603 734253

Mobile: 07950 471139

Horsford Bowls Club

**Enjoy a friendly game of bowls and
drink at our clubhouse
Also various social activities
throughout the year**

**Membership enquiries for beginners
or experienced players**

Contact: Malcolm Makins, 8 Warren Close, Horsford, NR10 3SU
Telephone: 01603 891422 (Secretary)

top pixel
Local Digital Web Agency

**SEO Audit
£95***

Mike Haddon MSc

01603 905813

mike@toppixel.co.uk

Website Design

Ecommerce websites

Secure hosting and emails

SEO and website analytics

Fully responsive web design

Pay per click advertising

10 years qualified experience

*We can give your website a full SEO Audit.
This identifies areas that can be improved
to better your websites search engine
ranking. The service costs £95.00, but could
vary depending on the size of the website.

www.toppixel.co.uk

SHOP NUMBER

130

ANGLIAN CARPETS
Magdalen Street NR3 1JD
01603 632600/1

..anglian carpets..
'A Family Store' Est 1984
Over 30 Years Experience

Free Fitting
Service within 20 mile radius
Free Planning & Estimating
SPECIAL OFFERS
All Year round

Our Estimator
Will Call
At A Time
Suitable For You
With All Your
Chosen Samples

Domestic & Commercial

We Offer A Home Choose Service!
We Can Beat Any Genuine Quote!

www.angliancarpets.com
angliancarpets@angliancarpetsltd.co.uk

Call Free On **0800 597 6871**

Or Visit Our Large Showroom At:

130 Magdalen Street, Norwich Tel: 01603 632600/1

Open 9-5pm Mon-Fri 10-4 Sat

New Electric Solutions



YOUR LOCAL ELECTRICIAN

- Electric Showers & Fans
- Electric Heating
- Fuse Board Upgrade
- Fault Finding
- Conservatories
- Security Lighting
- Extra Sockets/Lights
- Indoor/Outdoor Lighting
- House Rewires
- Part P Approved
- PAT Testing
- All work Guaranteed



For a free competitive quote call:
Rob Newsome (01603) 714715 Mob 07799 686 410
Website: www.newelectricsolutions.co.uk
Email: newelectricsolutions@hotmail.com



GUTTER & FASCIA CLEANING

S. BURTON CLEANING SERVICES

No need to buy or paint your tired Fascias,
 Guttering or Bargeboards...

...We can clean them to look like new!

- Guttering Cleared
- Conservatory Roofs Cleaned
- Window Cleaning Available
- Reliable Service • Competitive Rates

T: 01603 462509

26 Delane Road, Drayton, Norwich NR8 6DL

1300706

DAWN DRAKE

CURTAIN MAKING SERVICE

NORWICH 413717

*Loose Covers, Blinds, Swags and Tails
 All soft furnishings undertaken.
 Track supplied and fitted.*

**FREE MEASURING and
 ESTIMATES
 PROMPT DELIVERY**

410103

ZAK BRANCH LTD

professional tree surgery



www.zakbranchltd.co.uk



TREE SURGERY



FENCING



LANDSCAPING



FIRE WOOD



info@zakbranchltd.co.uk



Tel: 01263 731926

Mob: 07510 048408

T a v e r h a m V e t s

Taverham Vets, Fir Covert Rd, Taverham, Norwich. NR8 6HT
01603 867330
www.taverhamvets.co.uk e-mail: enquiries@taverhamvets.co.uk

- Lovely caring hand picked veterinary team!
- Great value veterinary care.
- Comprehensive "Pet Health" plan to spread the cost of routine health care and providing discounts on many other services.
- "RCVS Advanced Practitioners" meaning that referral to specialist centres is rarely needed.
- Canine Hydrotherapy underwater treadmill, Physiotherapy and Osteopathy available on site.
- Luxury boarding "Cat Hotel" run by veterinary nurses.
- Routine appointments Saturdays (9am-3.30pm) and Sundays (10.30am-3.30pm) for registered clients
- Late evening surgeries until 8pm Monday-Friday
- Key-hole bitch spays and cryptorchid castrates.
- Puppy and Kitten Packages.
- 24hour emergency care with discounted rates for health plan members with Norwich Night Vet.
- Vets and nurses on site 24/7 providing exceptional care for hospitalised patients
- Tours of the Practice available by request.
- Check out our reviews on Facebook and Google!




Welcome to Taverham Vets

£10

Taverham Vets would like to welcome you to our practice and offer you a £10 voucher to redeem off any services or goods at Taverham Vets.

Main Branch
 Taverham Veterinary Practice
 Fir Covert Road
 Taverham
 Norwich NR8 6HT
 Tel: 01603 867330
 E-mail: enquiries@taverhamvets.co.uk

Longwater Lane Branch
 Longwater Lane
 Costessey
 Norwich
 NR8 5AH
 Tel: 01603 747344

T a v e r h a m  V e t s

This voucher may not be exchanged for cash and is for new client registrations only. Minimum spend £35.
 Not for use with Norwich Night Vet. Voucher Expiry 31.12.16

R A H Bannock MA VetMB MRCVS
G D C Pitcher MA VetMB CertVR CertSAO CertSAS MRCVS
T R A Robertson MA VetMB CertVDI CertVC MRCVS

**Upgrade your old inefficient gas boiler to
 a new condensing high efficiency
 system**



PLUMBING & HEATING Ltd

**Your Local Corgi Registered
 Gas Specialists**

**Installation, servicing & repair of heating
 systems & gas appliances**

Complete bathroom fitting

**General plumbing repairs
 & maintenance**

For a free quotation please call

01603 262465

APM BLINDS

**MADE TO MEASURE QUALITY BLINDS
 SUPPLIED AND FITTED AT AFFORDABLE
 PRICES**

**ROLLER. VERTICAL. VENETIAN
 WOODEN VENETIAN.
 ROMAN WOODWEAVE. PLEATED
 CONSERVATORY/BLINDS**

**BLACKOUT BLINDS FOR VELUX WINDOWS
 UNIQUE BLIND SYSTEMS FOR TILT AND
 TURN WINDOWS
 EXTENSIVE RANGE OF COLOURS AND
 FABRICS AVAILABLE**

**PLEASE CALL FOR FRIENDLY FREE ADVICE
 AND A NO OBLIGATION QUOTATION**

TEL: 01603 891914
MOB: 07984 424272
EMAIL: andymillsey@yahoo.co.uk

HORSFORD VILLAGE HALL

The Perfect Venue for any Private Function

Weddings, Birthdays, Christenings and More!!

- **Large Hall**
- **Kitchen**
- **Licensed Bar**
- **Ample Parking**
- **Stage**
- **Dance floor and Disco lighting!**

For more details and rates:

Website:- <http://www.horsfordvillagehall.co.uk/>

or
 call **01603 893900**



PRONTO JOINERY LTD

Timber window and door manufacturer
For all your made to measure joinery
Glass and painting available
Visit our web site for more information



Contact us for a free quotation
Dog Lane Horsford
Norwich NR10 3DH
Tel 01603 890239
sales@prontojoinery.co.uk
www.prontojoinery.co.uk
Like us on Facebook



Repairs to double glazed windows, doors and conservatories

Local independent business

Free estimates, No call out charge

Steamed up windows, broken handles, hinges, replacement gasket, plus cat flaps, door panels and more

01603 520136 or 0800 1601932

sandcwindows@gmail.com www.sandcwindows.co.uk

Suzanne's Mobile Foot Clinic

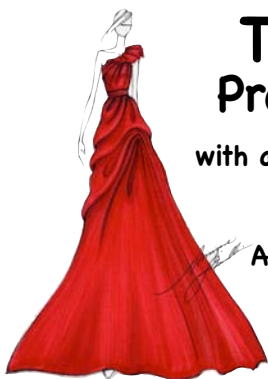
Do you suffer from:

- Discomfort
- Corns
- Callus
- Fungal cracked heels
- Thickened nails or just wanting nails trimmed?

Professional treatments in the comfort of your own home

Contact Suzanne
for treatment of foot related problems on
01603 261653 or 07771502197

Fully qualified health practitioner



The Wardrobe Prom & Ball Gowns

with a Styling & Alteration Service

Open Tues 10am-7pm
All other days by appointment

07888 654652

55 Angela Cres, Horsford, Norwich NR10 3HE

C8430



SNB Plumbing and Heating

Hall Road Hainford

Oil, Gas and LPG Boilers,
Cookers, fires and water heaters.
Serviced, repaired and installed.
Including Residential Park Homes

Please call Karen or Steve on
01603 897235 or 07917807908
to book in your
job or for a free quotation.
email: steve@snbp.uk



Moonbeam Reiki Therapy

Julia Wright, Mobile Reiki Therapist
moonbeamreikitherapynorwich@outlook.com

Covering Norfolk

07906734539

TIM THE PLUMBER



Friendly & reliable service
No job too small



**Bathroom installation, Maintenance
& general plumbing repairs
Plastering & Coving**

Telephone 07881 478848 or 01603 710390
tim.newstead@btinternet.com

City & Guilds Qualified
Fully insured

PLS BUILDING & GARDEN MAINTENANCE SERVICES

DECORATING AND GARDEN MAINTENANCE
LAWNS & HEDGES CUT
PATIOS
GARDEN CLEARANCE AND LANDSCAPE

Tel: 01603 893505 Mobile: 07050 129 822

WINDOW CLEANER

FRIENDLY FAMILY RUN BUSINESS

**(01603) 868014
07717 185767**

MOST QUOTES CAN BE
GIVEN OVER THE PHONE

GUTTER CLEANING

FREE CAMERA SURVEY

WE ALSO CLEAN FASCIAS AND
CONSERVATORY ROOFS

CALL FOR A NO OBLIGATION QUOTE
(01603) 868014

420405

(Peter J. Wright - est. 1985)



Professional Painter & Decorator

• Exterior & Interior Painting & Decorating

 Norfolk County Council

• Wall Paper Hanging



FREE Estimates - Fully Insured

For a friendly service at a competitive price...

Telephone Peter on:

01603 488796

2, Three Corner Drive, Old Catton, Norwich NR6 7HA

WATERWAYS

PLUMBING SERVICES

All General & Emergency Plumbing Work

**General Plumbing • Leaks • Overflows
Burst Pipes • Showers • Pumps • Toilets
Taps • Bathroom Refurbishments • Tiling**

**LOCAL & FAST RESPONSE
FREE QUOTES - 20% O.A.P DISCOUNT
CITY & GUILDS QUALIFIED
FULLY INSURED**

**24 Hour Service • 365 Days a Year
No Job Too Small**

*A reliable and trustworthy domestic plumbing
service, offering competitive prices, with ALL
work fully guaranteed.*

01603 261559 / 07795 807244

B.B.H. LTD

PVC-U Windows & Doors

*"Enhance your home
and enrich your life
with home improvement
products from BBH"...*

Installers of PVC-U

- Windows • Composite Doors
- Vertical Sliding Sash • Bays
- Bi-folding Doors • Bays Porches
- Patio Doors • Conservatories
- French Doors • Garage Doors
- Fascia, Soffit & Guttering
- Equinox Warm Roof

CALL NOW:

01603 897350

www.bbhltd.co.uk

Units 9-10 • 251 Holt Road
Horsford • Norwich NR10 3EB



PR09829/9



FREE QUOTATION



10 YEAR GUARANTEE



NO SALESMAN



ALL CUSTOM
MADE

Now fitting 'A' Rated
energy-efficient
windows

KEVIN GRAY DECORATING

Professional Decorating Services

Best quality work including:-

- Interiors
- Exteriors
- Wallpaper hanging
- Hand painted kitchens
and furniture
- Wall spraying
- Fully insured
- Free estimates

Email: kevin.gray40@gmail.com

Website: www.kevingraydecorating.com

27 Corner Lane, Horsford, NR10 3DG / Tel: 07879612700 or 01603 560052



1st Class Aerials

07725 182952

New TV Aerials / Repairs
Freeview / Sky / Free Sat
Extra TV points
HD over Ethernet

B. J. DENNIS & SON

"Britain's Favourite Plumber Award" – County Winner

Established in 1973

**GAS & LPG ENERGY SAVING BOILERS AND FULL CENTRAL HEATING INSTALLED
BOILER SERVICING AND POWER FLUSHING CARRIED OUT BY CERTIFIED ENGINEERS**

ALL WORK FULLY GUARANTEED

TELEPHONE: 01603 897 297 / MOBILES: 07970762149

www.bjdennisandsonheating.co.uk

MEMBERS
OF THE

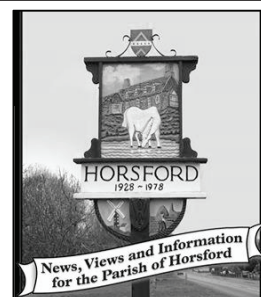


2 THISTLEDOWN ROAD, HORSFORD, NORWICH, NR10 3ST

THE Horsford News

- Need to stand out from the competition?
- Starting up a new business or promoting an existing one?
- Need quality exposure at competitive prices?

Advertise locally - advertise here!



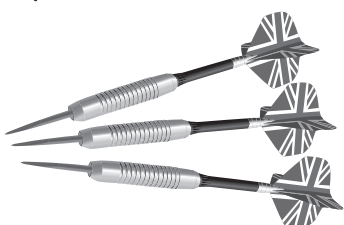
**Choose from many styles including this new banner format!
Contact Lisa Starling - Editor 01603 891902**



Carmichael's Trophies

109 Magdalen Street, Norwich
Tel: 01603 624368

Trophies and Engraving for all sports
Darts and Accessories
First Class Engraving Service
Quotations Given



Prop: David & Stuart Willimott



James Electrical & Property Services



Electrical Installations
Household Carpentry
General Maintenance
PAT Testing



01603 339066 / 07557025890
www.jameselectricalnorwich.co.uk

Crystal's Floral Designs

- ❖ Flowers for all occasions
- ❖ Funeral flowers
- ❖ Flower arranging workshops and demonstrations

Ring Crystal:

- 01603 291190
- 07493 354286



Alan Cook Independent Financial Adviser



Portfolio Reviews
Investments & Savings
Protection & Insurance
Retirement Planning Advice
Long Term Care Planning
Inheritance Tax Planning

Tax planning advice is not regulated by the Financial Conduct Authority. 2plan wealth management Ltd is authorised and regulated by the Financial Conduct Authority. It is entered on the Financial Services register (www.fca.org.uk) under reference 461598.



Contact our office now for your initial portfolio review at our cost, we can meet at our Aylsham office or in your own home.

01263 732309, 6 Penfold Street, Aylsham, Norfolk, NR11 6ET
07900 816927, alan.cook@2plan.com | www.alancook.2plan.com



School Garage Felthorpe

THE STREET, FELTHORPE, NORWICH NR10 4DG

MOTORCYCLE MOT TESTING NOW AVAILABLE

M.O.T Testing

Tyres

Exhausts

Servicing

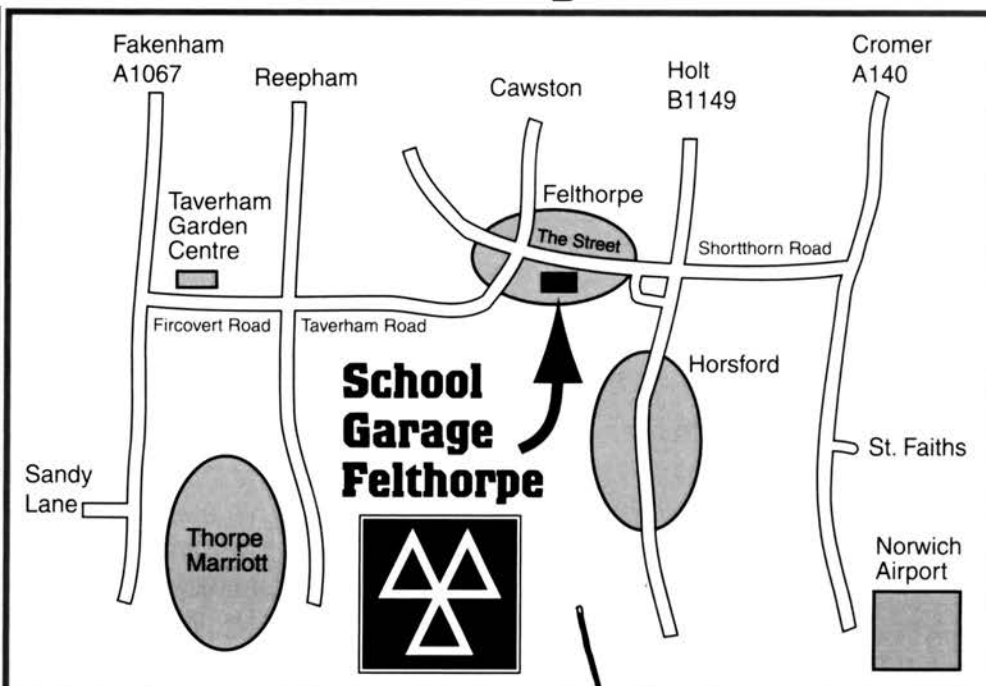
Repairs

**Air Con
Servicing**

LIGHT COMMERCIAL VEHICLE SALES
Class 4 cars ♦ Class 7 commercials
Diesels tested ♦ Catalysts tested

**MOT'S
WHILE
YOU
WAIT!**
**BY
APPOINTMENT**

**FREE
COURTESY
CAR**
WHEN AVAILABLE



01603 754272
01603 754232

**ALL MAKES OF CARS AND LIGHT
VANS SERVICED AND REPAIRED**

...it's inst around the corner!



FAX:
01603
754274



Armchair **Mortgages** Ltd

Te
Email: neilkumar@armchair-mortgages.com

Neil Kumar - Mortgage Broker based in Horsford

Locally based mortgage broker with access to a comprehensive range of mortgages from an extensive panel of lenders covering all your needs; remortgaging, first time buyers, buy to let, credit impaired and right to buy plus a specialist in Help to Buy and Shared Ownership. With over 25 years experience in Financial Services, I am confident I will be able to find the right mortgage for you.

I am also able to help protect your life, health, income, family and your home, by creating bespoke solutions with products from a range of insurers.

I do **NOT** charge an up-front broker fee and any associated costs will be discussed and agreed with you in writing prior to agreeing to proceed. All mortgage and insurance recommendations will only be provided after completion of a thorough Fact Find.

Armchair Mortgages Ltd are Directly Authorised by the Financial Conduct Authority (FCA), Number 612752. Business established 1st June 2000. References available upon request.
Head Office: 60 Foxfields Way, Huntington, Cannock, West Midlands, WS12 4TA.

Your home may be repossessed if you do not keep up repayments on your mortgage.

BEADLE

1410106

PROPERTY
CARE LTD



specialists

Norfolk Based BWPDA Member Assures Quality & Professionalism At All Times



**SPECIALISTS FOR
CONTRACTS OF ALL SIZES**

- Timber Treatment • Damp Proofing
- Woodworm • Dry Rot
- Rising Damp
- Basement Waterproofing

QUALIFIED SURVEYORS

30 Year Backed Guarantee
Green Range Materials (For Your Safety)
English Nature Approved Materials
1 Hour Re-entry

01603 755455

www.beadlepropertycare.com
Old Kings Head, Haveringland, Norwich, NR10 4PT

BROADLAND PROBATE SERVICES LTD

- **Wills**
- **Inheritance Tax planning to include Trusts**
- **Administration of Estates**
- **Lasting Power of Attorney deeds**
- **Registration of Lasting and Enduring Power of Attorney deeds**
- **Court of Protection work**

FREE DOCUMENT STORAGE

Home visits - Evening and Saturday appointments available

Friendly and professional service from a fully qualified and experienced Lawyer

MICHAEL YOUNG FCILEx 01603 717175

www.broadlandprobateservices.co.uk



Mole Girl

Super Hero Mole Catcher

Traditional Mole Catcher

No Mole No Fee - Competitive Rates - Seniors Discount

Kerrie 01603 710263 / 07780 607697

Horsford

www.molegirl.co.uk

CALM IN THE CITY
COMPLEMENTARY THERAPY & WELLBEING

Hatha Yoga Classes

Suitable for all levels

Classes every Monday & Thursday, 7:00-8:15pm
Trinity Church, Thorpe Marriott

& every Wednesday, 7:00-8:15pm.
Taverham Village Hall

Massage, Healing Therapies and private 1-2-1 Yoga also available.

Contact Rachel to book: 07793 279567
www.mycalmthecity.co.uk rachel@mycalminthecity.co.uk



www.napit.org.uk



National Association of
Professional Inspectors & Testers

PETER STANGER - ELECTRICIAN

Installations:- showers, sockets and light
Repairs to fridges, cookers and heater
Single point to complete rewire

Free Quotes

Tel: 01603 261735

Mobile: 07887 781762

34 Steeple Chase, Drayton, Norwich

05076

T DACK

ARTEX - COVING - RE- BOARD
PLASTERING - TILING

HONEST, RELIABLE, CLEAN SERVICE

REPAIRS / INSURANCE WORK

FREE QUOTES

TELEPHONE

01603 710325

07944 963886

ILLUSIONS HAIR SALON



**LOCAL PROFESSIONAL HAIR SALON
FOR ALL ASPECTS OF HAIRDRESSING**

**AT ILLUSIONS YOU WILL RECEIVE AN
INDIVIDUAL AND STYLISH SERVICE IN A
MODERN AND FRIENDLY ENVIRONMENT**

**10% OFF FOR NEW CLIENTS
WITH THIS VOUCHER**

POPPYFIELDS, HORSFORD, NR10 3SR

01603 890552



Airport Chauffeurs *UK.com*

Chauffeur Driven at Taxi Prices

STANSTED from £28*

LUTON from £30*

Fleet of Exec Cars & 1 to 8 Seat MPVs

**prices based on per person rate of 4 persons in a basic car*



Email: norwich2airports@msn.com

Phone 0800 783 9030 SMS/Text 07767 820801

Garden Maintenance, Landscape & Fencing Services

- Bespoke gates made to order
- All types of fencing supplied and erected
- Hedge cutting and removal
- Turf supplied and laid
- All types of hard landscaping
- Walls, patios, brickweave, shingle drives etc.
- Mini and wheel digger work undertaken
- Garden and garage clearances

FREE Estimates phone Steve on:

01603 755280

or

07808 960784

www.sjlandscapingandfencing.co.uk

FLS

HAVE NOW BEEN APPOINTED AS A
MAIN STOCKIST FOR STIHL AND VIKING
IN NORFOLK



Church Lane | Felthorpe | Norwich NR10 4DP
Tel: 01603-754890

FELTHORPE LAWNMOWER SERVICES
felthorpelawnmowers.co.uk



THE INSURANCE CENTRE

EST: 1985

INDEPENDENT INSURANCE BROKERS

*A Local Office
for the Local Community*

ALL TYPES OF INSURANCE TRANSACTED

**MOTOR • HOME
COMMERCIAL • TAXIS**

8 - 10 CROMER ROAD, NORWICH NR6 6ND

TEL 01603 400755

Waggamut Cut



Dog
Grooming &
Styling



City &
Guilts
trained

**To book an appointment
contact Debbie**

01603 897403 or 07906 440556

DO YOU LIVE IN ONE OF THE OLDEST HOUSES IN THE VILLAGE OF HORSFORD?
 PERHAPS YOU LIVE ON THE 'NEW ESTATE' WHICH IN FACT IS OVER 20 YEARS OLD, MAYBE YOU LIVE
 IN THE NEW HOMES THAT ARE BEING BUILT IN OUR VILLAGE...
 BECAUSE THAT IS WHAT HORSFORD IS - OUR VILLAGE!!
 YOU DON'T EVEN NEED TO LIVE IN THE VILLAGE TO JOIN US....

WE WELCOME EVERYONE AT **HORSFORD SOCIAL CLUB**

Look out for further details

Men's & Ladies Darts Teams
 Pool Teams
 Local football teams
 Sky TV
 BT Sport



OPENING TIMES

Monday	17:00 - 23:00
Tuesday	17:00 - 23:00
Wednesday	17:00 - 23:00
Thursday	17:00 - 23:00
Friday	17:00 - 23:30
Saturday	14:00 - 23:30
Sunday	12:00 - 23:00

MEMBERSHIP RENEWALS

If you are a member of the social club, you will have now had your membership renewal. The membership clinic will take place on:
 Sunday 7th April

BECOMING A NEW MEMBER

If you would like to join the social club, please feel free to drop in and ask for a joining form. Or alternatively email

horsfordsocialclub@hotmail.com

Under 18's free
 Junior membership available (16-18)

The Social Club has been running in the village of Horsford since 1993. It was started by a few friends putting a few pennies together to run a social evening behind the bar in the village hall.

Since then, the social club has evolved to what it is today.

Horsford Social Club is organised by committee members who all volunteer to help keep the social club running for all to visit. Anyone interested in joining the committee are welcomed with open arms, as does anyone who wishes to help, but without the commitment.

The Social Club promotes itself as a place where everyone is welcome.

Literally everyone... You, your children, your neighbour, your family that are visiting for the weekend.

All children welcome, whatever age and what ever time of the day. Secure play area available. You never need to worry about the baby sitter again!!

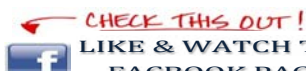
We have entertainment on Saturday evenings. Children's Events at Easter and Halloween and even the Christmas Party for the children of our social club to meet the big man himself - Father Christmas.

Along with the children's gatherings and Saturday night bands, the Social Club runs annual events to London to see the top West End Musical Productions, Race days, Golf days and many more trips.

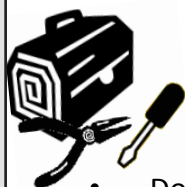
Details of all events are always on the notice board.

As we are a social club, there is a membership fee on an annual basis, but you ask any member and you soon get your money back on the cheap(er) drinks.

DO WE HAVE YOUR ATTENTION NOW?
 IF SO COME AND CHECK US OUT, AND REMEMBER -
MORE SOCIAL. LESS MEDIA!!



	1 st		FRI	DAY	
OF		EV	ERY		8PM
	MON	TH		ST	ART



Michael Taylor Electrician

- Do you need a plug socket moving?
- Do you need a light replacing?
- Do you need a full house rewire?

Domestic and commercial electrical work undertaken
 All work tested and certified

Tel. - 01603 278068

Mob. - 07837 902689

15 Manor Close, Buxton



NAPIT

Call

Boiler and Electrical Technician

Service and breakdown repairs to oil and gas boilers. Electrical work undertaken

CORGI Registered Gas Installer

Telephone: (01603) 261653

Mobile: 07990 520349

530103

Dog Grooming by Sarah



City & Guilds Trained

First Aid Trained

01603-927356 or 07786757371



Facebook Dog Grooming by
 Sarah@crowther78



M.G.D. Tree & Conifer Surgery

CAN'T SEE THE WOOD FOR THE TREES?

Tree & Conifer Surgery
Felling
Crown Reduction
Trimming
Ground Clearance

Free Estimates
Competitive Rates
Fully Insured
N.P.T.C. Certificates

CALL MARTIN TODAY

Mobile 07751 890519

Telephone 01603 755188
or 01603 423056

PC PROBLEMS?

Local Friendly Service!

Computer running slow?

Computer won't start?

Software not working?

Virus or spyware trouble?



Hardware upgrade?

Data backup?

Computer terrified?

Just need advice?

No Fix
No Fee

We come to you!

No Call
Out Fee

www.LINCcomputers.co.uk

Call 0798 9999 390 or Email Info@LINCcomputers.co.uk



The Bloomin'
Hair Salon

01603 866888

For Ladies & Gents

Unit 1, Taverham Craft & Country Shopping Centre
Behind Taverham Garden Centre

Find us on Facebook

ROBERT T. SMITH
PAINTER & DECORATOR

Interior

Exterior

Quality
Wallpapering

Quality
Workmanship



EST.1977

Friendly, Professional & Reliable Service

6 LAVENDER CLOSE, THE SHRUBLANDS, HORSFORD, NORWICH NR10 3EW
Tel: 01603 897372



Hate Ironing? Don't have the time?

Give Wrinkles & Crinkles a call
on 07762 229087

HELPING YOU STEAM AHEAD WITH YOUR DAY

Or find us on Facebook
www.facebook.com/wrinklesandcrinkles



**Simply Ballroom
& Latin Dancing**



Professional Tuition by Sally A. Smith
IDTA Qualified

- ❖ 1-2-1 Beginners to Advanced lessons
- ❖ 6 Week Beginners course
- ❖ Wedding First dance tuition
- ❖ Weekly classes



www.ballroomdancingnorfolk.co.uk - Tel. 01603897372

EASTERN COUNTIES ACCESS SOLUTIONS WORK AT HEIGHT SAFETY CENTRE

Eastern Counties Access Solutions is a trading name of Eastern Counties Scaffolding Services Limited

Tel: 01603 735130 – Fax: 01603 722844

e-Mail: enquiries@ecaccesssolutions.com – www.ecaccesssolutions.com

DON'T TAKE RISK WHEN WORKING AT HEIGHT



Difficult access problem e.g. over a conservatory

Contact us for a solution and free advice - **01603 735130**

We provide all Work at Height Safety equipment for Hire or Sale:

- Ladders / Step Ladders / Specialist Ladders / Loft Ladders
- Mobile Scaffold Towers - **(SPECIAL OFFER £35 / WK) + VAT**
- Purpose Built Scaffold
- Cherry Pickers (Aerial Access Platforms)
- Safety Harness
- Roof Edge Protection
- Mobile Man Anchors

WE ARE ALSO AN APPROVED TRAINING CENTRE FOR WORK AT HEIGHT SAFETY



NASC



What are you looking for from your dentist?

- A dentist who spends time listening to you and doesn't rush you out of the door
- Friendly staff and a relaxed environment
- One that offers dental payment plans to help you budget for your dental care
- One that understands if you haven't seen a dentist for a while
- Free parking • A practice for the whole family
- Free educational pack given to children at their first appointment



Well – you've found one here at Horsford Dental Practice.

We realise our patients are individuals and have their own unique requirements.



94 Holt Road | Horsford | Norwich

01603 898002

www.horsforddentalpractice.co.uk
admin.horsforddentalpractice@btconnect.com



Denplan

At the heart of dental care

Special Offers

We have two offers for new patients – choose which one best suits your dental needs.

Offer one - £50 off teeth whitening*
£215 (normally £265)

*not everyone is suitable for this treatment

Free check ups for children**

**under 5 years of age and booked with a parent examination

Denplan Limited, Denplan Court, Victoria Road, Winchester, SO23 7RG, UK. Tel: +44 (0) 1962 828 000. Fax: +44 (0) 1962 840 846. Part of Simplyhealth, Denplan Ltd is an Appointed Representative of Simplyhealth Access for arranging and administering dental insurance. Simplyhealth Access is incorporated in England and Wales, registered no. 183035 and is authorised by the Prudential Regulation Authority and regulated by the Financial Conduct Authority and the Prudential Regulation Authority. Denplan Ltd is regulated by the Jersey Financial Services Commission for General Insurance Mediation Business. Denplan Ltd only arranges insurance underwritten by Simplyhealth Access. Premiums received by Denplan Ltd are held by us as an agent of the insurer. Denplan Ltd is registered in England No. 1981238. The registered offices for these companies is Hambleden House, Waterloo Court, Andover, Hampshire SP10 1LQ.



AKS SKIP HIRE SERVICES LTD

Working Towards A Better Environment in Norwich

Skip Hire from £80 + vat

Load & Go from £50 + vat

Roll on Roll off from £150 + vat



Tel: 01603 789 555

Call Today for a **FREE** no obligation skip hire quote!

Woodside Lodge, Shortthorn Road,
Stratton Strawless,
Norwich, Norfolk NR10 5NU

info@aksskiphire.co.uk
www.aksskiphire.co.uk



United

DRIVING TUITION

f uniteddrivingtuition

☎ 01603 946980

☎ 01603 945386

☎ 07888 684150

✉ info@uniteddrivingtuition.co.uk

ANY COURSES AVAILABLE INCLUDING:-

- Male/Female Instructors
- Hourly Lessons
- Advanced
- Instructor and standard check training
- Flexible Lesson times
- Refresher
- Advanced



COMPETITIVE RATES/CHRISTMAS & BIRTHDAY VOUCHERS AVAILABLE
FOR MORE INFORMATION

WWW.UNITEDDRIVINGTUITION.CO.UK

24 Pimpernel Road Horsford, Norwich NR10 3SQ

Proud sponsors of Horsford Youth FC

FLOWERS BY NATALIE

A local professional florist with over
twenty years floristry experience

VINTAGE CAR HIRE

T. 01603 873309
M. 07776 420317

Cawswood, Holt Road
Cawston, Norwich NR10 4HP



Chimney Sweep

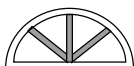
Jones the Sweep

STOVES, OPEN FIRES & SOLID FUEL APPLIANCES

- Fully insured
- Trained by a Guild professional
- Tidy, clean and efficient
- All work certificated



Telephone Harry on 01263 833362 or Mobile 07799 484012



Nick Britcher

Carpenter / Joiner



UPVC and Hardwood Home Improvement Specialist

Doors Windows Conservatories and UPVC Roofline
Supplied, Installed and Guaranteed

Kitchens Supplied and Installed, Wood Flooring
and all General Carpentry Work.

NO JOB TOO SMALL

For a FREE Quotation & Advice Call:

01603 412980 or 07761 975996



THE METICULOUS MOVERS

Woodland Farm, Shortthorn Road, Stratton Strawless, Norwich, NR10 5NU

Telephone : **01603 898679**

E-mail : enquiries@ollands.com

Website : www.ollands.com

- **Secure Storage Facilities**
- **Household & Commercial Removals**
- **Professional Packing Service**
- **Single Items / Part Loads available**
- **European & Worldwide Shipping**



APOLLO CLEANING

Carpet and Upholstery Cleaning Specialists

Established 1991

Latest truck mounted
equipment for
**DEEPER CLEANING &
FASTER DRYING**

Patios & pure water window cleaning

Stuart Thomson, 13 Berrington Road,
Hellesdon, Norwich NR6 6PH

Tel. 01603 423039/487278

Mobile 07770 811912

www.apollocleaners.co.uk

Nathan's Painting And Decorating

Internal Decorating

Gutter Cleaning

Wallpapering



External Decorating

Sheds and Fences

Plastering



*Always Happy with a
friendly service and
100% customers
satisfaction no job is
too big or small*

Contact me today for a free non-obligation quote

Nathan.stearman@hotmail.co.uk

07841481677/01603 897053



JERRY MARCH FUNERAL SERVICES

28 Holt Road, Horsford, NR10 3DD

01603 898202 (24hrs)

enquiries@jerrymarchfuneralservices.co.uk



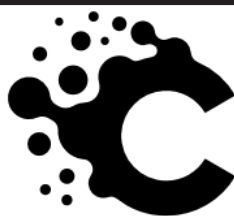
*Small independent family business established for over 175 years
Private woodland Chapel of Rest*

Some of the services we offer are:

- ❖ *Pre-paid funeral plans*
- ❖ *Floral tributes & memorials*
- ❖ *A fully bespoke funeral tailored to your wishes*

www.jerrymarchfuneralservices.co.uk

Do you need
PROFESSIONAL Paintwork
Correction & Protection?



COGNOSCENTICARCARE

PERFECT - PROTECT - PRESERVE

Services offered:

- ✓ Pre sale/end of lease detail
- ✓ PRESERVE maintenance detail
- ✓ New car preparation and PROTECT
- ✓ Gloss enhancement detail
- ✓ Heavy enhancement detail
- ✓ The COG correction detail
- ✓ Ceramic coatings, wax and sealants



Safe, secure, fully-insured studio in
which to care for your studio



High-quality tools and products from
industry standard suppliers



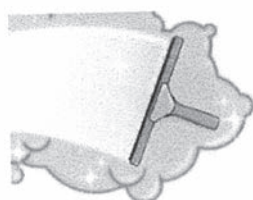
A friendly, professional service headed
up by a true car enthusiast

Get in touch today for a free no-obligation quotation for your vehicle

call us – 07786 271670

www.cognoscenticarcare.co.uk

**20%
DISCOUNT**
off all services – quote
HORSFORD NEWS



SPARKLE WINDOW CLEANING SERVICES

LOCAL DOMESTIC WINDOW CLEANER INCLUDING FASCIAS & CONSERVATORIES
INTERIOR & EXTERIOR WASHED PROFESSIONALLY

TRADITIONAL OR WATER FED POLE SYSTEM

FULLY INSURED, RELIBLE & FRIENDLY

FOR MORE INFORMATION CONTACT DEREK
(01603) 897811 / 07796 008452

K.D. Rivers Ltd.

BUILDING SERVICES

For all your Building Requirements

(Established 1993)



*Specialists in Carpentry, Windows
Doors Conservatories, Extensions
Facia & Guttering and all
General Home Improvements*



Call now for a free quotation on:

Tel: 01603 409694

Mobile: 07885 810822

Email kdriversltd@gmail.com

Website www.kdriversltd.co.uk



FENSA



www.facebook.com/KDRiversLtd

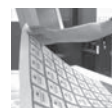
Bringing colour to life

Magazines &
Newsletters

Corporate
Stationery



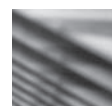
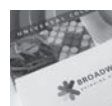
Design &
Marketing
advice



Information &
Presentation
Folders



FSC Certified



We specialise in most types of work from high quality product brochures, sales flyers, leaflets, magazines and folders through to business stationery.

ColourPrint
quality litho & digital printers

www.col-print.co.uk

t: 01603 488 001

e: sales@col-print.co.uk

Congratulations to the Horsford Vets Team who have got through to the Cup final again this year and will be playing on Friday 3rd May at FDC Norwich-kick off 7.30pm. Lots of local support would be good so why not pop over to Bowthorpe for a good night of football supporting your local lads.

Bingo is starting again on Friday 12th April after a winter break and we hope to run it on the 1st Friday of each month, but keep a check on our Horsford Social Club facebook page where we advertise future events. Lastly any Ladies in Horsford interested in joining the ladies darts team on a Wednesday night. They play in the Camera ladies darts league and are looking for more players to keep the team going. Call Jackie 787329. We have been delivering flyer through doors in Horsford over the past weeks to let everyone know what is on offer at the Social Club. As we all know there are lots of new residence in the village and would be great to see some of you in the Social Club with your family and friends. We had a great Quiz night and Gin bar at the end of March which saw the club very busy and lots of new faces coming in to have a look. We are planning more events over the summer so watch the noticeboards and join the facebook page to read our posts done by the talented and funny Sarah who will keep you all up

to date on Social Club news and other info you may need to know.

Below is listed the coming months entertainment and all bands are advertised on the A boards outside the club and noticeboards inside.

Sat 13th April – Stylotones

Sat 20th April – Uprising

Sun 21st April – Pure Passion

Sat 25th May – Funky Stuff

Sun 26th May – The Waps

Sat 8th June – Belle Ayre

Sat 29th June - Faith

Sat 13th July Village Vibes Event

Sat 27th July – Space Hoppers

The AGM this year is Sunday 9th June at 2.00pm in the clubroom. All members are welcome to attend to speak to committee and hear/read the financial accounts for the past year. The club e-mail address is horsfordsocialclub@hotmail.co.uk if you have any questions. Hope the summer months see lots of members and guests joining us for some of the events advertised or just for a nice evening out.

Jackie Carter - Horsford Social Club Secretary

Horsford Rainbows & Horsford Methodist Church
presents.....

Horsford Bake Off

Wednesday 5th, 12th, 19th & 26th June.

Entries from 6:30pm, judging from
7:00pm

Week 1- Victoria Sandwich

Week 2- Sausage Rolls

Week 3- Cupcakes/ Muffins

Week 4- Cookies/ Biscuits



Entry fee of £3.00 per week per entrant. Points awarded for 1st, 2nd and 3rd each week. There will be a grand final on Wednesday 3rd July where there will be a prize for the overall winner. The theme for the final week will be announced at the end of week 4. Please feel free to enter all or some weeks. Entries can be from adults or children. If we have enough entrants we can split them

If baking isn't your thing then why not be a judge.? Each week we need 3 judges, each pay £3.00 to be a judge.(this must be booked) Refreshments will be served so why not pop down for a sociable evening. Baking will be available for people to buy and take away.

To make a baking entry or to be a judge you must book in advance by calling 01603 929935/07948085517 or email rachellemargitson75@gmail.com

Any queries please do not hesitate to contact Rachelle on the numbers above.

HORSFORD RAINBOWS

Horsford Rainbows meet at Horsford Primary School on Holt Road Mondays during term time 430pm-530pm. Rainbows is for girls aged 5-7 and is part of Girlguiding. We have a friendly group of girls and leaders. All our leaders are first aid trained and DBS checked. Our meetings usual contain activities such as coloring, craft, games and we also work towards badges. We follow key calendar events so recently we've been celebrating Pancake Day, making Mothers Day gifts and doing lots of activities relating to Easter.

If you have any questions please do not hesitate to contact Rachelle on 929935/07948085517 or Ragan on 07766660500. Alternatively you can visit GO Girlguiding website and register your Daughters details and we will be in contact. Even if your Daughter is only a toddler please register her on the waiting list and we will be in contact as her 5th birthday approaches to discuss further.



HORSFORD FC

At the time of writing in April, we will have had 3 teams (U9 Hunters, U9 Hurricanes and Veterans)

reach cup finals in May, with the U12 Tigers and U14's still to play their semi-finals. Fingers crossed we will have brought home some.

Our Veterans were confirmed as Champions of the Leathes Prior Veterans League Premiership at the start of April, congratulations to the whole squad.

Our SSE Wildcats Centre at Horsford FC has now started, providing opportunities for girls aged 5-11 to train on a weekly basis with a further opportunity to create new girls teams in the village. We've also joined the Mars - Just Play programme which will allow us to offer Walking Football to over 50's. More details of both programmes will be available on our social media pages and at horsfordfc.co.uk in due course.

Our Annual Tournament has just taken place at the Village Hall, and we'd like to thank everyone for another successful event.

Our Mini Skills Soccer group (ages 4-6) still takes place every Saturday morning. Our new Under 7's team ready for September 2019. Any children aged 6 that would like to get involved, please get in touch.

As the club continues to expand and grow (we currently have 26 teams and will have over 30 by the end of 2019), we are looking for a home to call our own. Any landowners in the village that would be willing to work with us to provide a football facility for all - we'd love to hear from you.

Chris Brown - Chairman
07540753894





THE HORSFORD PLAYERS

At the time of writing we have just finished our last rehearsal for "Old Actors Never Die They Just Lose The Plot". A good dress rehearsal. Let's hope the three nights' performances go just as well!! Here are a couple of pics of the dress rehearsal action, plus a picture of the full cast:



We had a great time putting the play together. It took several weeks to train ourselves not to burst out laughing when various members of the cast made their final entrances (I mention no names, but I'm sure you can work out which two actors I mean!!).

We are a small friendly group who welcome anyone who would like to get involved in the production of plays. You don't necessarily have to act, there are plenty of other roles to be done, e.g. backstage crew, front of house, or even making the tea and coffee. Every role has a vital part to play in a production.

If you think you might be interested in joining us please contact me, or any other member of the group for more information.

Our next production is currently in the planning stage, hopefully a one act play with cheese and wine in the summer, so watch this space (or our Facebook page) for further news.

Sandy Kerridge
Publicity Manager
The Horsford Players
01603 927010
sandykerridge@hotmail.com





1ST HORSFORD AND ST FAITHS SCOUT GROUP

APPEAL TO FORMER SCOUTS (from the 1970s and 1980s)

In May 2020, the group reaches its 50th birthday. We are planning events for next year to mark this milestone - more to follow. To mark the occasion, we are currently producing a detailed history of the group and have seen many of the former leaders. However, to date we are yet to gather much in the way of photographs and memorabilia from the period 1970 to 1984. So we appeal to any former scouts or family of former scouts from that period who read this, to please make contact if you have anything that we can photocopy and return or have any memories you can share. Please contact treasurer@hsfscouts.org or Chris on 07710 635745.

NEW SCOUT HQ

As we head for our sixth decade, we have been planning for a new headquarters building on the present site. In light of higher than expected building cost quotes received, we are revising our building plans which still include a 12m x 9m meeting hall, new toilets and kitchen and retaining the current building which would be converted into meeting rooms and storage space.

THE GREAT NORWICH DUCK RACE 2019

We will once again be acting as an outlet for tickets to 'own a duck' for this year's duck race at Riverside - part of the official Lord Mayor of Norwich summer celebrations. Watch out for us selling tickets at the Co-op and Taverham Garden Centre. Please support us as we fundraise for the above project.

RECENTLY AT SCOUTS

The Scouting section of the Group has been targeting the Personal Challenge activities and will be starting the Adventure Challenge soon as they

are now doing more outside activities.

In the Costessey Hike this year of our two Scouting teams did very well and finished in 3rd and 4th place for the second year running. The Scouts attended the District Masters at Arms competition on 6th April and we won two trophies (individual standing high score and Top Team score)..a great effort!

BEAVERS & BROWNIES JUMBLE SALE - Sat 18th May 2019 (10:00-12:00)

Your local Beavers and Brownies are organising a Jumble Sale in Horsford at the Methodist Church in May. Any donations of unwanted items will be gratefully received, so please contact Sarah (shrek2509@me.com) if you do.

FAMILY BINGO NIGHT - Date to be arranged

This will be another fun night to look out for in the near future, which is going to be held at the Horsford Junior School.

As always, thank you for taking the time to read our submission to the Horsford News and we hope that we can count on your support with fundraising events that are helping us in raising money towards a new HQ for Horsford Scouts, Cubs and Beavers to enjoy into the future.

HORSFORD BOWLS CLUB SANDY LANE, HORSFORD

What a year we are having so far with our Short Mat Gold team leading the City League and with 3 of our last 4 games at home it is looking good for us to win it again this year. We have also been success-ful in the City Shield where our Gold Team has won through to the final and we are awaiting the date for this to be played which will be against Thorpe Marriot and we have high hopes of winning it again this year. These successes will be a high point for our Gold team captain Morgan Warnes who has de-cided not to lead us for the 2019/20 season and we wish her well for the future.

Our Blue Team which is experiencing its first year in the City League has found it tough going but has now started to pick up points so we have high hopes for next season. They have though had success in the City League triples competition with our Blue Team triple of Pauline Strivens, Barbara Russell and Dot Loftus winning through to the final which is taking place on Thursday 11th April, so watch this space.

Public Notice

A **Public Spaces Protection Order** has been implemented across the whole of Broadland District requiring those in charge of dogs to clear up after them on all land open to the public.

The order is in effect as of 1st March 2019.

The Order applies to the following land:

All roads and highways

Public footpaths and verges

Woodland

Heath

Sports and recreations grounds

Parks and public open spaces

Agricultural land and common land (unless the land owner has expressed permission to the contrary)



The maximum penalty for failing to comply with the order is £1,000 and the fixed penalty notice is £100.

A copy of the order can be viewed via the Council's website: www.broadland.gov.uk. Please telephone the Environmental Health Department on 01603 430488 for queries relating to any aspect of the Order.
Email: environ.protection@broadland.gov.uk



We have welcomed some new players into the club during the winter months and there are some more joining us for the summer so our membership numbers remain good but we will always welcome more new players. Our new club captain/s, Mick Dale and Chris Warnes have managed to get to grips with their new and demanding role and the summer programme has now gone to print and we are all looking forward to a busy summer season.

This year we are celebrating the club's 40th anniversary and on our green opening day 28th April we will be holding a triples competition when members will be playing for winners and runner up cups. To celebrate the occasion, we are having 40th anniversary bowls stickers produced and every member will be given a set. We will complete the afternoon with refreshments, a glass of wine and an opportunity for members to watch a DVD of club events over the years.

Our annual club spring clean is well under way and everything is looking good for the coming months. Steve has got the outdoor green looking good and should be in prime condition for our opening on the 28th.

John Bugg (chairman)
01603 890633
jfbe0940@gmail.com

WILDLIFE WHISPERS

HOLLY BLUE AND OTHERS TOO.

Sshhhh.....don't tell anyone but it's late March and we're watching a Holly Blue butterfly spotted by eagle-eyed Mrs C. of course. It keeps flitting around the holly tree in our garden and settling on some of it's buds. The butterfly, not Mrs C !

We're sure it's a Holly Blue because we know that this beautiful little creature is one of the butterflies which usually has two generations in one season, early spring and late summer, with the whole annual cycle starting around a Holly tree.....I'll explain.

The first brood hatches out in late March/early April from pupae which have over-wintered and these early butterflies feed on Holly buds laying their eggs there, as the resulting caterpillars also feed on Holly buds, eventually pupating and emerging as Holly Blues in the summer months.

The incredible thing is that this new generation,

hatching out in August and September, is attracted to Ivy buds for egg laying as the emerging caterpillars feed on Ivy. They eventually pupate and it's the pupae that overwinter and the cycle begins again the following early spring.

So by feeding on both Holly and Ivy throughout the year, two generations can mature annually, although in a more northerly climate only a single brood is produced. More rarely and if conditions are unusually suitable in southern areas, three broods have been known....but it's a rare thing though.

Look out for these attractive little butterflies then in March and April especially around Holly trees.

Here is the way some of our more common butterflies survive the winter.

A small number of Red Admirals overwinter as adult butterflies and start egg-laying often in early May. Numbers are swelled by immigrants arriving from the continent in May and June and the next generation hatches from June onwards.

White butterflies both large and small, usually have two broods, one in April and one in July. Very occasionally there may be three broods. The pupae hibernate over the winter months.

Adult Peacocks live almost a full year from July to May and then hibernating over the winter. Just one brood is produced each year from May onwards.

Small Tortoiseshell butterflies hibernate as adults through the winter and start egg laying in May. A second generation appears in August or September.

Comma adults hibernate over winter and there are two broods each year in July and September.

Meadow Browns have one brood a year from June onwards and live for four to six weeks. The larva hibernates over the winter.

Painted Ladies are immigrants from northern Africa and southern Europe producing two broods, the first in May and the second in August. They cannot survive the cold of our winters in any form.

Finally I can report that both myself and Mrs C hibernate over the winter months.

At our age there are no new hatchlings to report of in the spring, but we are lively during the summer months and flit around as best as we can!

Michael C

Our case of the month is the very handsome Fudge. Fudge is 3 years old and unfortunately one day he decided to eat his tennis ball...whole! Veterinary Surgeon Daniel operated and removed the ball from Fudge's stomach. Fudge can be seen here ready to go home with his medication bag and wearing his medical T-shirt. The offending ball can be seen inside the clear plastic bag (not quite the original colour!).

On the subject of dietary indiscretion. At this time of year people have been seen putting out grapes, raisins and nuts for birds along public foot paths. These are all potentially toxic for dogs so please make sure any bird food is placed out of reach of our canine friends. Grapes and raisins can potentially cause kidney failure and certain nuts such as Macadamia nuts or mouldy walnuts can also be toxic.

TRA Robertson
MA VetMB CertVDI CertVC MRCVS



**If anyone wants to include a story,
personal views or simply a thankyou,**

**PLEASE CALL LISA
ON 891902**

That's what the magazine is here for!

Useful information

Contact Organisation & name	Contact	Contact Organisation & name	Contact
Horsford Church Room Booking		Medical Surgeries	
Becky Blyth	891433 07768629751 beckyblyth@sky.com	St Faiths	898235
Horsford Village Hall bookings		Drayton	867532
Diane Baxter	893900	Horsford	897766
Horsford Bowls Club Secretary		Prescriptions	898300
Malcom Makins	891422	Horsford Dental Practice	898002
Horsford Youth Football Club		Clerk to the Parish Council -Mr J Graves	898621
Stephen Vincent	898147	County Services	
2nd Horsford & St. Faiths Guides		Police – non emergency	101
Jenny Reynolds	890063	Crime stoppers	0800 555111
1st Horsford Rainbows Rachelle Margitson Verity Fenwick rachellemargitson75@gmail.com verityfenwick@icloud.com	929935/07948085517 07824661105	Broadland District Council	0844 8008020
Horsford 3rd & St. Faiths 1st Brownies		Anglian Water - Emergencies	03457 145145
		Electricity - Emergencies	0800 7838838
Carole Smith	890657	Gas - Transco Emergency Service	0800 111999
Horsford 4th & St. Faiths Brownies	closed	Meals on Wheel	0788 7800502
1st Horsford & St. Faiths Scouts Group		Humanist Celebrant	
Mike Gleeson - Group Scout Leader gsl@hsfscouts.org	891269	Chris Copsey	710262
New members please email -: treasurer@hsfscouts.org		Methodist Church Horsford Rev. Mary Sachikonye	411295
Horsford Social Club Jackie Carter - Secretary	787329	All Saints Church Horsford	
		Church warden Wendy Tooby	897240
Horsford British Legion (Men) Mr Rob Beall	868272	Revd Margaret McPhee revmargaretmcphee@gmail.com	893108
Horsford Players			
Palt Wright	898634		
Horsford Afternoon WI		<p>The Horsford News takes no responsibility for the reliability and accuracy of content made by contributors and/or advertisers. These contact details will be published at least once a year. The accuracy of these are not guaranteed and are reliant on contacts and organisations keeping the Editor informed.</p> <p>The Horsford News welcomes article content and advertisers. Please contact the Editor for more details.</p> <p>This magazine is now in its 40th year! The next issue will be out in February 2019 Closing date for Copy will be April 8th 19</p> <p>Articles and adverts for insertion can be sent to The Editor by email as PDF or MS</p>	
Penny Brunt	897665		
Norfolk County Cricket Club			
Manor Park Horsford	424635		
Schools			
St Faith VC First School			
Mr John Marshall-Grint - Head	898353		
Horsford Pre School & Giggletots			
Michelle Cory - Manager	890811		
Marie Hall Chairperson@horsfordpreschool.co.uk			
Horsford Primary School			
Ashley best-White - Head	898348		



Coach Excursions With IC Travel!

Pick-ups & parking from Taverham with our new Mercedes coaches!

Fully escorted trips – Fast, friendly direct service! Coach Hire and Private Hire for Airport transfers etc. with 7, 16, 33 and 53 seater executive vehicles

May 2019

Sat 4 th May	Film Gala Concert RAH	8.30am	£65
	Kensington Museums		£25/£15
Wed 8 th May	Bury St Edmunds Market	9am	£18
Thurs 9 th May	Phantom Of The Opera	8.30am	£65
	Mamma Mia		£65
Fri 10 th May	Kensington Dolls House Festival	8am	£37
Sun 12 th May	The Kingdom Choir – Ipswich	4pm	£70
Tues 14 th May	Stonham Barns	9.30am	£28
	& Olde Tyme Music Hall		
Thurs 16 th May	This Morning Live! NEC Birmingham	7am	£50
Sat 18 th May	National Flower Show – Hylands House	8.30am	£35
	Chelmsford		
Mon 20 th May	Kentwell Hall, Gardens & Farm	9am	£38
Sat 25 th May	Chelsea Flower Show	8am	£98
Thurs 30 th May	Newark Antiques Fayre	7am	£35
Fri 31 st May	Walpole St Peter Flower Festival	9.30am	£18

June 2019

Sat 1 st June	Springfields Quilt Show	8am	£23/£18
Tues 4 th June	DAX over Normandy – Duxford	9am	£50
Wed 5 th June	Hugh Jackman World Tour – O2	1.30pm	£100
Fri 7 th June	Rod Stewart – Portman Road	3pm	£129/£25
Sat 8 th June	Newmarket Nights – Nile Rogers	10.30am	
	Premier £70, Grandstand £65, Coach Only £30		
Thurs 13 th June	Champagne View from The Shard	8am	£72
	& Café Rouge 2 course Lunch		
Thurs 13 th June	Spice Girls Wembley - Travel	1pm	£35
Fri 14 th June	Gardeners World Live – NEC	7.30am	£50
Fri 14 th June	Spice Girls Wembley - Travel	1pm	£35
Sat 15 th June	Shuttleworth Airshow	1pm	£48
Sat 15 th June	Spice Girls Wembley	1pm	£35
Sun 16 th June	Windsor 2 Day Break	8am	from £199
	with Afternoon Tea		
Fri 21 st June	Paul Weller – Thetford	4.30pm	£27/£84

IC Travel— 39 The Street, Ringland, Norwich NR8 6AB

01603 868680

See a full list of trips at www.ictravel.co.uk

Request your free 2019 brochure!





CONSERVATORY OUTLET INDOOR SHOWROOM

OPEN 7 DAYS A WEEK!

(OPPOSITE ASDA IN HELLESDON)

Free
Survey
and Quotation

GENUINE
SAVINGS
NOW!

UP TO **40% OFF**

**WINDOWS, DOORS
& CONSERVATORIES**

"I strongly recommend to anyone thinking of a garden room that they visit Amber's showroom. It helped us immensely when deciding on our orangery, as all of the models on show are fully furnished, and we could see the quality and visualise how it would look when it was installed at our home."

Mrs E, Taverham

ONLY £99 DEPOSIT

**BUY NOW
PAY NOTHING UNTIL
2020**

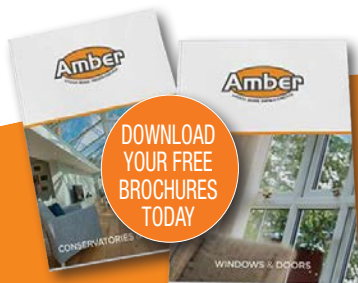
and pay no interest on your order*
*Credit is provided subject to application and status, terms and conditions do apply



Our state of the art indoor Norwich Showroom is almost 5000ft² and is packed with exciting conservatories, orangeries, windows, doors and more!

We've installed, decorated and furnished our conservatories, orangeries and garden rooms so there are room settings where you can sit and imagine the lifestyle space and luxury we will add to your home.

You can view roof systems including lanterns, glass & solid roofs and lots more.



DOWNLOAD
YOUR FREE
BROCHURES
TODAY

CONSERVATORIES | SOLID ROOFS | ORANGERIES | WINDOWS

PATIO DOORS | PORCHES | GARDEN ROOMS | BIFOLDING DOORS | FRONT DOORS | ROOFLINE

TEL: 01603 672638

**52 HELLESDON PARK INDUSTRIAL ESTATE,
NORWICH, NORFOLK NR6 5DR**

WWW.AMBERHOME.CO.UK

